

SUSTAINABLE

LegendLife®
Where brands live™

24/25
RANGE

legendlife.com.au

 **Atlantis**
 **JAMES HARVEST**
 **STORMTECH®**
 **J. HARVEST & FROST**
CORPORATE SHIRTMAKER



WELCOME



Welcome to our 2024/25 Collection of Sustainable Headwear and Apparel

We believe that sustainability starts with quality. Each product in this collection is thoughtfully designed with modern trends in mind and crafted from materials that stand the test of time.

Our fabrics are ethically sourced and certified by leading third-party organisations, including SMETA, BSCI, Global Recycling Standard (GRS), Better Cotton Initiative (BCI), and Global Organic Cotton Standard (GOTS).

As part of our ever-evolving commitment to sustainability, we continuously seek to reduce our environmental impact through thoughtful design, responsible sourcing, and eco-friendly business practices. Our main facility with in-house decoration services operates on solar power and recycled rainwater.





CONTENTS

ATLANTIS

6

STORMTECH

16

JAMES HARVEST

64



Supacolour.



Supaetch





Supaflex



Sublimation





At Atlantis Caps, we specialize in creating top-quality headwear with passion, care, and mindfulness of our responsibility to the world and the people around us.

We use only the finest materials to ensure our products are of the highest quality, and our commitment to sustainability ensures that we are doing our part for the environment.

THE ROAD TO SUSTAINABILITY

SUSTAINABLE FABRICS

ORGANIC COTTON



Organically grown cotton comes from controlled and certified crops, supporting biodiversity and healthier ecosystems. As a result, water use is significantly reduced, soil fertility is maintained, and the working conditions and health of farmers and their families are improved.

RECYCLED POLYESTER



Recycled polyester, or rPET, is made from polymers obtained by melting down used plastic bottles and converting them into textile fibers. Did you know that nearly 1 million plastic bottles are purchased worldwide every minute?

POLYLANA®



PolyLana® fiber allows to be blended with any natural and synthetic fiber to enhance and adjust performance, look, or other characteristics of the final product. PolyLana® fiber can be dyed at low temperatures giving the yarn, once knitted, a delicacy and also a unique consistency.

CARBON FOOTPRINT

A further step
in reducing the
impact of today
and tomorrow

As a company that designs and distributes hats and beanies, we are aware that our items generate an impact on the environment and people. Based on this realization, we decided to embark on a **path to reduce our impact as much as possible.**

Our goal is set for **2025: to reduce the environmental impact of all Atlantis-branded products compared to current versions.**

Third-party Standards & Programs

D TO NABLE HEADWEAR

RECYCLED COTTON



Recycled cotton fabrics use pre & post consumer waste and less virgin cotton. It reduces the negative impacts of cotton farming like water consumption, CO₂ emissions, intensive land use, and gives a new life to textile waste.

RECYCLED NYLON



Recycled nylon is made from nylon waste from products that have already been manufactured, sold, used, and then discarded by consumers. It can also be made from the waste that's left over during the processes where nylon is made into a product.

2025

THE ENTIRE ATLANTIS HEADWEAR COLLECTION WILL BE PRODUCED WITHIN A SUSTAINABLE MINDSET, BY USING CERTIFIED MATERIALS AND PRODUCTION PROCESSES WITH A LOWER IMPACT ON OUR ENVIRONMENT BY 2025.

THE REVOLUTION IS COMING.



Why we choose low-impact products compared to conventional ones

The carbon footprint of our hats & caps





Olive/Black



Black/Black



Dark Grey/Black



Navy/Navy



White/White



A5300 | Recy Three Cap

SPECIFICATIONS:

- Structured front panels • Mid visor • PVC closure • 2 sewn eyelets on front • Sweatband: 100% GRS-certified recycled cotton • 6 rows on visor
- Fabric: 60% GRS-certified recycled cotton, 40% classic cotton – Side & Back: 100% GRS-certified recycled polyester mesh.

RECOMMENDED DECORATION:



SUSTAINABLE FEATURES:





Black



Grey



Navy



A5700 | Fraser Organic Dad Hat

SPECIFICATIONS:

• Unstructured 6 panel cap • 100% organic cotton twill • Metal buckle closure • Sticker on peak

RECOMMENDED DECORATION:



SUSTAINABLE FEATURES:



Khaki



Black



Grey



Navy



White



A1155 | Beat Recycled Polyester Cap

SPECIFICATIONS:

• 6 panel, structured cap • Mid visor • Snap back closure in recycled PVC • Recycled polyester buckram inside front panels • Sweatband in recycled polyester fabric • Fiber made from polymers obtained by recycling plastic bottles

RECOMMENDED DECORATION:





Navy/Navy



Black/Black



Dark Grey/Black



A5400 | Bryce Recycled Trucker

SPECIFICATIONS:

- Structured 6 panel trucker cap
- Recycled polyester twill front panels
- Recycled polyester mesh side and back panels
- Recycled PVC snapback closure

RECOMMENDED DECORATION:



SUSTAINABLE FEATURES:



Black



Dark Grey



Navy



A1855 | Creep Corduroy - Recycled Polyester

SPECIFICATIONS:

- Mid visor
- Adjustable back closure with a metal buckle
- Unstructured front panels
- Sweatband in recycled polyester twill fabric
- 100% recycled polyester corduroy - 215gsm
- Fiber made from polymers obtained by recycling plastic bottles

RECOMMENDED DECORATION:



SUSTAINABLE FEATURES:





Khaki



Black



Navy



White



A1010 | Dad Hat - Recycled/Organic Cotton

SPECIFICATIONS:

- Unstructured 6 panel cap • Unstructured front panel • Recycled and organic cotton • Mid visor • Full metal bucket with metal hole

RECOMMENDED DECORATION:



SUSTAINABLE FEATURES:





Grey



Black



Dark Grey



Navy



White



A1310 | Estoril Recycled

SPECIFICATIONS:

- 6 Panels • Half piping on visor • High quality hook & loop closure with plastic buckle • Recycled buckram • R-pet sweatband • Recycled polyester
- Retraze recycled curved visor • 6 sewn eyelets on crown • Main fabric: 100% recycled polyester jacquard

RECOMMENDED DECORATION:



SUSTAINABLE FEATURES:





Navy



Black



Dark Grey



Khaki



Olive



A3300 | Cruz Organic Cotton Flat Peak

SPECIFICATIONS:

• Unstructured 5 panel • Flat peak • Snap back closure in recycled PVC • 80% organic cotton / 20% recycled cotton canvas • Sweatband in organic/ recycled cotton

RECOMMENDED DECORATION:



SUSTAINABLE FEATURES:



Navy



Black



Burgundy Melange



Dark Grey Melange



Light Grey Melange



A4570 | Holly Polyana Beanie

SPECIFICATIONS:

• 60% Polyana recycled polyester / 40% acrylic • Double layer • One size fits most • Polyana reduces environmental impact, water consumption and energy emission throughout the production process

RECOMMENDED DECORATION:



SUSTAINABLE FEATURES:





Navy



Black



Dark Grey



A4170 | Shine

SPECIFICATIONS:

- Reflective yarn • Main fabric: 50% recycled polyester, 50% acrylic • 4 darts on top • Double layer • 6 stitchings • Flat machine • Gauge 10-rib 1x1
- Tear away label

RECOMMENDED DECORATION:



SUSTAINABLE FEATURES:



Black



Dark Grey Melange



Light Grey Melange



Navy



A4010 | Brad Beanie - Recycled Polyester

SPECIFICATIONS:

- Dual style • Ribbed beanie • Main fabric: 100% recycled polyester • Cold proof • Long shaped

RECOMMENDED DECORATION:



SUSTAINABLE FEATURES:





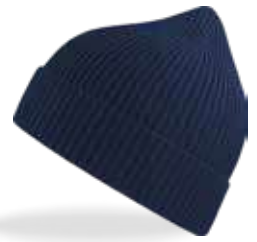
Light Grey Melange



Black



Dark Grey Melange



Navy



A4520 | Andy Recycled Beanie

SPECIFICATIONS:

• 50% recycled polyester / 50% acrylic • Roll-up cuff • One size fits most

RECOMMENDED DECORATION:



SUSTAINABLE FEATURES:



Dark Grey



Black



Navy



A4310 | Recycled Polyester Wind Beanie

SPECIFICATIONS:

• Certified recycled polyester fiber made from polymers obtained by recycling plastic bottles • Roll-up cuff

RECOMMENDED DECORATION:



SUSTAINABLE FEATURES:





PURE EARTH[®]

SUSTAINABILITY

H2XTREME
WATERPROOF. BREATHABLE.

Ultimate weather protection through advanced waterproof/breathable technology, engineered to keep moisture at bay, inside and out. H2XTREME[®] membranes stop water and wind from penetrating the garment while allowing water vapor to escape, keeping you warm and dry in all weather conditions.

H2XDRY
MOISTURE MANAGEMENT

Next-to-skin climate control with moisture management technology to regulate your core. Body moisture is transported from the skin to the fabrics outer surface through the capillary action of specialized moisture wicking yarns.



PFCs are a group of manufactured compounds that are widely used to create water repellent finishes for high performance outerwear. These chemicals help garment makers achieve breathable water/oil repellent fabrics.

By turning discarded plastics into polyester and committing to sustainably sourced cotton, STORMTECH is helping reduce the waste and environmental impact associated with apparel production.



Polygiene®

Polygiene StayFresh treated garments reduce environmental impact by up to one-third.



FEATHERFREE
THERMAL SHELL

Highly efficient and highly compressible synthetic down alternative-maximum warmth in extreme cold.



We understand exceeding expectations of our customers means providing access to service offerings that are unmatched in the industry. We're proud to stand behind the quality, craftsmanship, and performance of all our products.



PSX-2
Ferrera Polo



PURE EARTH[®]
SUSTAINABILITY



STORMTECH[®]

PSX-2 | PSX-2W

Ferrera Polo

FEATURES

- Pure Earth by STORMTECH™ • Snag Resistant Fabric
- UPF Rating 50+ • STORMTECH H2X-DRY® Moisture Management
- Rib Knit Collar and Sleeve Cuff • Classic 3-Button Placket
- Taped Neck Seam • Hem Side Slits

FABRICATION

94% BCI Cotton/6% Spandex Pique, 6.78 oz/yd2 (USA) / 230gsm (CDN)

RECOMMENDED DECORATION:



H2XDRY
MOISTURE MANAGEMENT

UPF 50+
UV SUN PROTECTION

UVX
SUN PROTECTION

ANTI-SNAG
FINISH



M's & W's:
Black

M's & W's:
Dolphin

M's & W's:
Navy

M's & W's:
White



STW-1
Torrente Polo

POLOS

PURE EARTH[®]
SUSTAINABILITY



STORMTECH[®]

STW-1 | STW-1W

Torrente Polo

FEATURES

- Pure Earth by STORMTECH[™] • STORMTECH H2X-DRY[®] Moisture Management • UPF Rating 50+ • Engineered Anti-Curl Collar
- Classic 3-Button Placket • Dropped Back with Hem Side Slits
- Mechanical Stretch

FABRICATION

50% Recycled Polyester/50% Polyester, 4.72 oz/yd² (USA) / 160gsm (CDN)

RECOMMENDED DECORATION:



H2X DRY
MOISTURE MANAGEMENT

UPF 50+
UV SUN
PROTECTION

ANTI-SNAG
FINISH



M's & W's:
Charcoal Mix



M's & W's:
Grey Mix



DXP-2
Sienna Polo



PURE EARTH[®]
SUSTAINABILITY

STORMTECH[®]

DXP-2 | DXP-2W

Sienna Polo

FEATURES

- Pure Earth by STORMTECH[™] • STORMTECH H2X-DRY[®] Moisture Management • UPF Rating 50+ • Anti-Pill Fabric • Engineered Anti-Curl Collar • Open-V 2-Button Placket (W's only) • Contoured Seaming • Dropped Back with Hem Side Slits • Mechanical Stretch

FABRICATION

100% Recycled Polyester Double Pique, 5.13 oz/yd2 (USA) / 174gsm (CDN)

RECOMMENDED DECORATION:



H2X DRY
MOISTURE MANAGEMENT

UPF 50+
UV SUN PROTECTION

UVX
SUN PROTECTION



M's & W's:
Bright Red

M's & W's:
Classic Blue

M's & W's:
Dolphin



DXP-3W
Galapagos
Polo

POLOS

PURE EARTH[®]
SUSTAINABILITY



STORMTECH[®]

DXP-3 | DXP-3W

Galapagos Polo

FEATURES

• Pure Earth by STORMTECH[™] • STORMTECH H2X-DRY[®] Moisture Management • UPF Rating 50+ • Anti-Pill Fabric • Engineered Anti-Curl Collar • Classic 3-Button Placket • Dropped Back with Hem Side Slits • Mechanical Stretch

FABRICATION

100% Recycled Polyester Double Pique, 5.13 oz/yd2 (USA) / 174gsm (CDN)

RECOMMENDED DECORATION:



H2X DRY
MOISTURE MANAGEMENT

UPF 50+
UV SUN
PROTECTION

UVX
SUN PROTECTION



M's & W's:
Bright Red

M's & W's:
Classic Blue

M's & W's:
Dolphin

POLOS



PURE EARTH[®]
SUSTAINABILITY



STORMTECH[®]

PSX-3 | PSX-3W

Oasis Polo

FEATURES

• Pure Earth by STORMTECH™ • STORMTECH H2X-DRY® Moisture Management • Polygiene® Freshness Technology • Snag Resistant Fabric • Classic 3-Button Placket • UPF Rating 50+ • Anti-Curl Collar with Collar Stays • Articulated Action Shoulders • Mechanical Stretch • Hem Side Slits

FABRICATION

55% BCI Cotton/40% Recycled Polyester/5% Spandex Single Jersey, 4.72 oz/yd2 (USA) / 160 gsm (CDN)

RECOMMENDED DECORATION:



H2XDRY
MOISTURE MANAGEMENT

UVX
SUN PROTECTION

ANTI-SNAG
FINISH

UPF 50+
UV SUN PROTECTION

PSX-3
Oasis Polo



M's & W's:
Black

M's & W's:
Dolphin

M's & W's:
Ice Blue

M's & W's:
Navy

M's & W's:
Rust

M's & W's:
Sage Green

M's & W's:
White



POLOS

PURE EARTH[®]
SUSTAINABILITY



STORMTECH[®]

PSX-4 | PSX-4W

Settebello Polo

FEATURES

- Pure Earth by STORMTECH[™] • STORMTECH H2X-DRY[®] Moisture Management • Snag Resistant Fabric • Classic 3-Button Placket
- UPF Rating 30+ • Anti-Curl Collar with Collar Stays • Mechanical Stretch • Hem Side Slits

FABRICATION

60% BCI Cotton/40% Recycled Polyester Single Jersey, 4.57 oz/yd2 (USA) / 155gsm (CDN)

RECOMMENDED DECORATION:



PSX-4W
Settebello Polo



M's & W's:
Black

M's & W's:
Classic Blue

M's & W's:
Dolpin

M's & W's:
Ice Blue

M's & W's:
Rust

M's & W's:
Sage Green

M's & W's:
White



TFX-1
Camino Performance
Short Sleeve Polo



PURE EARTH[®]
SUSTAINABILITY

STORMTECH[®]

TFX-1 | TFX-1W

Camino Performance Short Sleeve Polo

FEATURES

- Pure Earth by STORMTECH[™] • Stormtech H2X-DRY[®] Moisture Wicking Fabric • UPF Rating 50+ • Articulated Action Shoulders • Collar Stand • 3-Button Placket • Contoured Seaming

FABRICATION

100% Recycled Polyester Double Pique, 5.13 oz/yd2 (USA) / 174gsm (CDN)

RECOMMENDED DECORATION:



H2XDRY
MOISTURE MANAGEMENT

UPF 50+ UV SUN
PROTECTION

UVX
SUN PROTECTION



M's & W's:
Black

M's & W's:
Graphite

M's & W's:
Navy



PTS-1
Treeline
Performance
Short Sleeve Polo

POLOS

PURE EARTH[®]
SUSTAINABILITY



STORMTECH[®]

PTS-1 | PTS-1W

Treeline Performance Short Sleeve Polo

FEATURES

- Pure Earth by STORMTECH[™] • STORMTECH H2X-DRY[®] Moisture Management • Snag Resistant Fabric • UPF Rating 50+
- 3-Button Placket • Anti-Curl Collar • Collar Stand • Mechanical Stretch • Hem Side Slits

FABRICATION

100% Recycled Polyester Double Pique, 4.28 oz/yd² (USA) / 145gsm (CDN)

RECOMMENDED DECORATION:



H2X DRY
MOISTURE MANAGEMENT

UVX
SUN PROTECTION

ANTI-SNAG
FINISH

UPF 50+
UV SUN PROTECTION



M's & W's:
Black

M's & W's:
Graphite

M's & W's:
Navy



HXR-2
Milano L/S Crew Neck



PURE EARTH®
SUSTAINABILITY

STORMTECH®

HXR-2 | HXR-2W

Milano L/S Crew Neck

FEATURES

- Pure Earth by STORMTECH™ • STORMTECH H2X-DRY® Moisture Management • UPF Rating 50+ • Self-Fabric Crew Neck Collar
- 4-Way Stretch Fabric • Articulated Action Shoulders • Flatlock Seams • Contoured Side Panels

FABRICATION

46% Recycled Polyester/45% Polyester/9% Spandex, 6.55 oz/yd2 (USA) / 222gsm (CDN)

RECOMMENDED DECORATION:



H2XDRY
MOISTURE MANAGEMENT

UPF 50+
UV SUN PROTECTION

UVX
SUN PROTECTION



M's & W's:
Black
Heather

M's & W's:
Charcoal
Heather

M's & W's:
Classic Blue
Heather

M's only:
Rust
Heather

M's & W's:
Sage Green
Heather



TEES



PURE EARTH[®]
SUSTAINABILITY



STORMTECH[®]

TSX-3 | TSX-3W

Oasis Tee

FEATURES

• Pure Earth by STORMTECH™ • STORMTECH H2X-DRY® Moisture Management • Polygiene® Freshness Technology • Snag Resistant Fabric • 1x1 Rib Knit Crew Neck • UPF Rating 50+ • Mechanical Stretch

FABRICATION

55% BCI Cotton/40% Recycled Polyester/5% Spandex Single Jersey, 4.72 oz/yd2 (USA) / 160 gsm (CDN)

RECOMMENDED DECORATION:



H2X DRY
MOISTURE MANAGEMENT

UVX
SUN PROTECTION

ANTI-SNAG
FINISH

UPF 50+ UV SUN
PROTECTION

TSX-3
Oasis Tee



M's & W's:
Black

M's & W's:
Dolphin

M's & W's:
Classic Blue

M's & W's:
Navy

M's & W's:
Rust

M's & W's:
Sage Green

M's & W's:
White



WK-2
Ashburn Henley



PURE EARTH[®]
SUSTAINABILITY



STORMTECH[®]

WK-2 | WK-2W

Ashburn Henley

FEATURES

- Pure Earth by STORMTECH™ • STORMTECH H2X-DRY® Moisture Management • UPF Rating 50+ 1x1 Rib Knit Collar and Cuffs
- 3-Button Henley Placket • Anti-Pill Waffle Fabric

FABRICATION

58% BCI Cotton/42% Recycled Polyester Waffle, 5.54 oz/yd2 (USA) / 188gsm (CDN)

RECOMMENDED DECORATION:



H2XDRY
MOISTURE MANAGEMENT

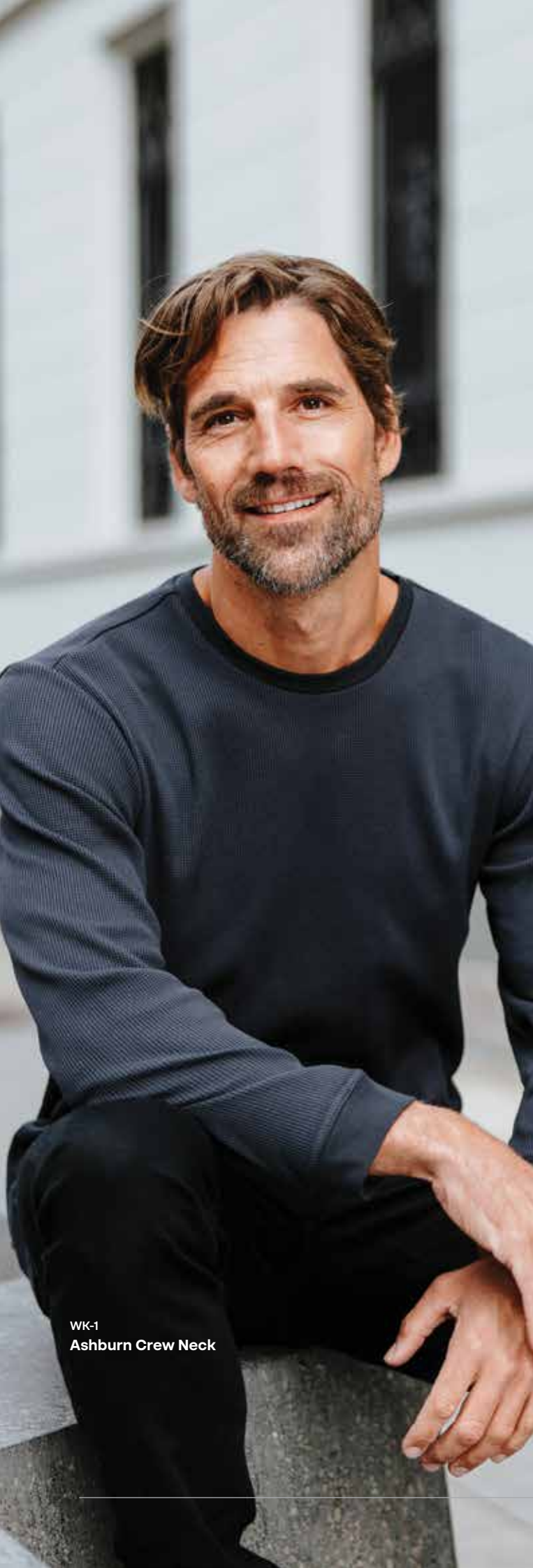
UPF 50+
UV SUN PROTECTION

UVX
SUN PROTECTION



M's & W's:
Black

M's & W's:
Graphite



WK-1
Ashburn Crew Neck

TEES



PURE EARTH[®]
SUSTAINABILITY



STORMTECH[®]

WK-1 | WK-1W

Ashburn Crew Neck

FEATURES

- Pure Earth by STORMTECH[™] • STORMTECH H2X-DRY[®] Moisture Management • UPF Rating 50+ • 1x1 Rib Knit Collar and Cuffs
- 3-Button Henley Placket • Anti-Pill Waffle Fabric

FABRICATION

58% BCI Cotton/42% Recycled Polyester Waffle, 5.54 oz/yd2 (USA) / 188gsm (CDN)

RECOMMENDED DECORATION:



H2X DRY
MOISTURE MANAGEMENT

UPF 50+
UV SUN
PROTECTION

UVX
SUN PROTECTION



M's & W's:
Black

M's & W's:
Graphite



CPF-2
Montebello Performance
Long Sleeve Tee



PURE EARTH™
SUSTAINABILITY



STORMTECH™

CPF-2 | CPF-2W

Montebello Performance Long Sleeve Tee

FEATURES

- Pure Earth by STORMTECH™
- UPF Rating 50+1x1
- Rib Knit Collar and Cuffs
- 1x1 Rib Crew Neck
- Taped Neck Seam
- Hem Side Slits

FABRICATION

58% BCI Cotton/38% Recycled Polyester/4% Spandex Single Jersey, 6.19 oz/yd2 (USA) / 210gsm (CDN)

RECOMMENDED DECORATION:



H2X DRY
MOISTURE MANAGEMENT

UPF 50+
LIV SUN
PROTECTION

UVX
SUN PROTECTION



M's & W's:
Black

M's & W's:
Charcoal
Heather

M's & W's:
Indigo

M's & W's:
White



TEES

PURE EARTH[®]
SUSTAINABILITY



STORMTECH[®]

CPF-1 | CPF-1W

Montebello Performance Short Sleeve Tee

FEATURES

- Pure Earth by STORMTECH[™] • UPF Rating 50+ • 1x1 Rib Crew Neck
- Taped Neck Seam • Hem Side Slits

FABRICATION

58% BCI Cotton/38% Recycled Polyester/4% Spandex Single Jersey,
6.19 oz/yd² (USA) / 210gsm (CDN)

RECOMMENDED DECORATION:



H2X DRY
MOISTURE MANAGEMENT

UPF 50+
UV SUN
PROTECTION

UVX
SUN PROTECTION

CPF-1
Montebello Performance
Short Sleeve Tee



M's & W's:
Ash
Heather

M's & W's:
Black

M's & W's:
Charcoal
Heather

M's & W's:
Indigo

M's & W's:
Taupe

M's & W's:
White



CPM-2
Equinox Long Sleeve Tee



PURE EARTH™
SUSTAINABILITY



STORMTECH™

CPM-2 | CPM-2W

Equinox Long Sleeve Tee

FEATURES

- Pure Earth by STORMTECH™ • UPF Rating 30+ • 1x1 Rib Crew Neck
- Taped Neck Seam • Hem Side Slits

FABRICATION

60% BCI Cotton/40% Polyester Single Jersey, 5.46 oz/yd2 (USA) / 185gsm (CDN)

RECOMMENDED DECORATION:



M's & W's:
Black

M's & W's:
Dolphin

M's & W's:
Steel Blue

M's & W's:
White



TEES

PURE EARTH[®]
SUSTAINABILITY



STORMTECH[®]

CPM-1 | CPM-1W

Equinox Short Sleeve Tee

FEATURES

- Pure Earth by STORMTECH[™] • UPF Rating 30+ • 1x1 Rib Crew Neck
- Taped Neck Seam • Hem Side Slits

FABRICATION

60% BCI Cotton/40% Polyester Single Jersey, 5.46 oz/yd² (USA) / 185gsm (CDN)

RECOMMENDED DECORATION:



H2X DRY
MOISTURE MANAGEMENT

UPF 30+
UV SUN
PROTECTION

UVX
SUN PROTECTION

CPM-1
Equinox Short
Sleeve Tee



M's & W's:
Black

M's & W's:
Dolphin

M's & W's:
Classic Blue

M's & W's:
Mineral

M's & W's:
Rust
Heather

M's & W's:
Sage Green
Heather

M's & W's:
Steel Blue

M's & W's:
White



TLX-2
Volante H2X-Dry L/S Tee



PURE EARTH[®]
SUSTAINABILITY

STORMTECH[®]

TLX-2 | TLX-2W

Volante H2X-Dry L/S Tee

FEATURES

• Pure Earth by STORMTECH[™] • STORMTECH H2X-DRY[®] Moisture Management • Polygiene[®] Freshness Technology • Snag Resistant Fabric • Self-Fabric Crew Neck Collar • UPF Rating 30+ • 4-Way Stretch Fabric • Articulated Action Shoulders • Flatlock Seams Contoured Side Panels

FABRICATION

47% Recycled Polyester/47% Polyester/6% Spandex Single Jersey, 5.01 oz/yd² (USA) / 170gsm (CDN)

RECOMMENDED DECORATION:



H2X DRY
MOISTURE MANAGEMENT

UVX
SUN PROTECTION

ANTI-SNAG
FINISH

UPF 30+
UV SUN PROTECTION



M's & W's:
Ash
Heather

M's & W's:
Charcoal
Heather

M's & W's:
Granite
Heather



TSX-5
Volante H2X-Dry Tee

TEES



PURE EARTH[®]
SUSTAINABILITY



STORMTECH[®]

TSX-5 | TSX-5W

Volante H2X-Dry Tee

FEATURES

- Pure Earth by STORMTECH[™] • STORMTECH H2X-DRY[®] Moisture Management • Polygiene[®] Freshness Technology • Snag Resistant Fabric • Self-Fabric Crew Neck Collar • UPF Rating 30+ • 4-Way Stretch Fabric • Articulated Action Shoulders • Flatlock Seams • Contoured Side Panels

FABRICATION

47% Recycled Polyester/47% Polyester/6% Spandex Single Jersey, 5.01 oz/yd2 (USA) / 170gsm (CDN)

RECOMMENDED DECORATION:



H2X DRY
MOISTURE MANAGEMENT

UVX
SUN PROTECTION

ANTI-SNAG
FINISH

UPF 30+
UV SUN PROTECTION



M's & W's:
Ash
Heather

M's & W's:
Charcoal
Heather

M's & W's:
Granite
Heather

M's only:
Rust
Heather

M's & W's:
Sage Green
Heather

W's only:
Ice Blue
Heather



TFX-2W
Tundra Performance
Short Sleeve Tee



PURE EARTH™
SUSTAINABILITY

STORMTECH®

TFX-2 | TFX-2W

Tundra Performance Short Sleeve Tee

FEATURES

- Pure Earth by STORMTECH™ • STORMTECH H2X-DRY® Moisture Management • UPF Rating 50+ • Articulated Action Shoulders • Crew Neck Self-Fabric Collar • Contoured Seaming

FABRICATION

47% Recycled Polyester/47% Polyester/6% Spandex Single Jersey, 5.01 oz/yd2 (USA) / 170gsm (CDN)

RECOMMENDED DECORATION:



H2X DRY
MOISTURE MANAGEMENT

UPF 50+ UV SUN
PROTECTION

UVX
SUN PROTECTION



M's & W's:
Black

M's & W's:
Graphite

M's & W's:
Navy



TSX-4
Settebello Tee

TEES



PURE EARTH[®]
SUSTAINABILITY



STORMTECH[®]

TSX-4 | TSX-4W

Settebello Tee

FEATURES

- Pure Earth by STORMTECH[™] • STORMTECH H2X-DRY[®] Moisture Management • Snag Resistant Fabric • 1x1 Rib Knit Crew Neck • UPF Rating 30+ • Mechanical Stretch

FABRICATION

60% BCI Cotton/40% Recycled Polyester Single Jersey, 4.57 oz/yd² (USA) / 155gsm (CDN)

RECOMMENDED DECORATION:



UV SUN
PROTECTION



M's & W's:
Black

M's & W's:
Classic Blue

M's & W's:
Dolphin

M's & W's:
Ice Blue

M's & W's:
Rust

M's & W's:
Sage Green

M's & W's:
White



SBR-2W
Skeena S/S Shirt



PURE EARTH[®]
SUSTAINABILITY



STORMTECH[®]

SBR-2 | SBR-2W

Skeena S/S Shirt

FEATURES

- Pure Earth by STORMTECH[™] • Easy Care Finish • Coconut Button Closure • Single Chest Pocket • Contoured Hem • Flat Felled Side Seams • Collar Stand

FABRICATION

60% BCI Cotton/40% Recycled Polyester, 4.13 oz/yd² (USA) / 140gsm (CDN)

RECOMMENDED DECORATION:



M's & W's:
Black/Carbon

M's & W's:
Earth/White

M's & W's:
Zinc/White



SBR-1
Molokai S/S Shirt

SHIRTS

PURE EARTH[®]
SUSTAINABILITY



STORMTECH[®]

SBR-1 | SBR-1W

Molokai S/S Shirt

FEATURES

• Pure Earth by STORMTECH[™] • Easy Care Finish • Full Front Button Closure • Single Chest Pocket • Contoured Hem • Flat Felled Side Seams • Collar Stand

FABRICATION

60% BCI Cotton/40% Recycled Polyester, 4.13 oz/yd² (USA) / 140gsm (CDN)

RECOMMENDED DECORATION:



M's & W's:
Carbon/Black

M's & W's:
Mineral/Black

M's & W's:
Navy/Classic Blue



FHZ-1
Avalanche
Full Zip Fleece
Jacket



PURE EARTH[®]
SUSTAINABILITY

STORMTECH[®]

FHZ-1 | FHZ-1W

Avalanche Full Zip Fleece Jacket

FEATURES

- Pure Earth by STORMTECH™ • Ultra Soft Sweater Knit Fleece with Brushed Interior • Brushed Tricot Lined Collar/Cuff/Hem • Zippered Chest Pocket • Zippered Hand Warmer Pockets • Raglan Sleeves • Color Matched Trim • Flatlock Seams • Low-Profile Chin Saver

FABRICATION

75% Recycled Polyester/25% Polyester Fleece, 9.44 oz/yd2 (USA) / 320gsm (CDN)

RECOMMENDED DECORATION:



M's & W's:
Black
Heather

M's & W's:
Grey
Heather

M's & W's:
Navy
Heather

M's & W's:
Oatmeal
Heather

M's & W's:
Sage Green
Heather

PURE EARTH[®]
SUSTAINABILITY



STORMTECH[®]

FHP-1 | FHP-1W

Avalanche 1/4 Zip Pullover

FEATURES

- Pure Earth by STORMTECH™ • Ultra Soft Sweater Knit Fleece with Brushed Interior • Brushed Tricot Lined Collar/Cuff/Hem • Extended 1/4 Zip Front • Zippered Chest Pocket • Raglan Sleeves • Color Matched Trim • Flatlock Seams • Low-Profile Chin Saver

FABRICATION

75% Recycled Polyester/25% Polyester Fleece, 9.44 oz/yd2 (USA) / 320gsm (CDN)

RECOMMENDED DECORATION:



FHP-1
Avalanche
1/4 Zip Pullover



M's & W's:
Black
Heather

M's & W's:
Grey
Heather

M's & W's:
Navy
Heather

M's & W's:
Oatmeal
Heather

M's & W's:
Sage Green
Heather



TWX-2
Monashee
Fleece Full
Zip Hoody



PURE EARTH[®]
SUSTAINABILITY



STORMTECH[®]

TWX-2 | TWX-2W

Monashee Fleece Full Zip Hoody

FEATURES

- Pure Earth by STORMTECH™ • UPF Rating 50+ • Full Front Zipper Closure • 3-Piece Hood with Adjustable Drawcord • 1x1 Rib Knit Cuffs and Hem • Kanga Pockets • Double Topstitching • Color Matched Trim

FABRICATION

59% BCI Cotton/41% Recycled Polyester Fleece, 7.28 oz/yd2 (USA) / 247gsm (CDN)

RECOMMENDED DECORATION:



M's & W's:
Black

M's & W's:
Charcoal
Heather

M's & W's:
Denim
Heather

M's & W's:
Granite
Heather

M's & W's:
Mineral

M's & W's:
Moss
Heather

M's & W's:
Navy

M's & W's:
Oatmeal
Heather

M's & W's:
Taupe



TWX-3
Monashee
Fleece Pullover
Hoody

OUTER WEAR

PURE EARTH[®]
SUSTAINABILITY



STORMTECH[®]

TWX-3 | TWX-3W

Monashee Fleece Pullover Hoody

FEATURES

- Pure Earth by STORMTECH[™] • UPF Rating 50+ • 3-Piece Cross-Over Hood with Adjustable Drawcord • 1x1 Rib Knit Cuffs and Hem
- Kanga Pockets • Double Topstitching • Color Matched Trim

FABRICATION

59% BCI Cotton/41% Recycled Polyester Fleece, 7.28 oz/yd² (USA) / 247gsm (CDN)

RECOMMENDED DECORATION:



M's & W's:
Black

M's & W's:
Charcoal
Heather

M's & W's:
Denim
Heather

M's & W's:
Granite
Heather

M's & W's:
Mineral

M's & W's:
Moss
Heather

M's & W's:
Navy

M's & W's:
Oatmeal
Heather

M's & W's:
Taupe



TWX-5
Monashee 1/4 Zip Pullover



PURE EARTH™
SUSTAINABILITY



STORMTECH™

TWX-5 | TWX-5W

Monashee 1/4 Zip Pullover

FEATURES

- Pure Earth by STORMTECH™ • UPF Rating 50+ • 1x1 Rib Knit Cuffs and Hem • 1/4 Zip Front • Set-in Sleeves

FABRICATION

59% BCI Cotton/41% Recycled Polyester Fleece, 7.28 oz/yd2 (USA) / 247gsm (CDN)

RECOMMENDED DECORATION:



M's & W's:
Black

M's & W's:
Grey Heather



OUTER WEAR

PURE EARTH[®]
SUSTAINABILITY



STORMTECH[®]

TWX-1 | TWX-1W

Monashee Fleece Crew Neck Sweater

FEATURES

- Pure Earth by STORMTECH[™] • UPF Rating 50+ • 1x1 Rib Knit Crew Neck Collar • 1x1 Rib Knit Cuffs and Hem • Raglan Sleeves
- Double-Topstitching

FABRICATION

59% BCI Cotton/41% Recycled Polyester Fleece, 7.28 oz/yd² (USA) / 247gsm (CDN)

RECOMMENDED DECORATION:



TWX-1W
Monashee
Fleece Crew
Neck Sweater



M's & W's:
Black

M's & W's:
Charcoal
Heather

Men Only:
Denim
Heather

Men Only:
Granite
Heather

Men Only:
Mineral

M's & W's:
Navy

M's & W's:
Oatmeal
Heather

M's & W's:
Taupe



TWX-4
Monashee Henley



PURE EARTH[®]
SUSTAINABILITY



STORMTECH[®]

TWX-4 | TWX-4W

Monashee Henley

FEATURES

- Pure Earth by STORMTECH™
- UPF Rating 50+
- 1x1 Rib Knit Cuffs and Hem
- 3-Button Henley Placket
- Raglan Sleeves

FABRICATION

59% BCI Cotton/41% Recycled Polyester Fleece, 7.28 oz/yd2 (USA) / 247gsm (CDN)

RECOMMENDED DECORATION:



M's & W's:
Black

M's & W's:
Granite
Heather

M's & W's:
Navy



WK-3
Ashburn Pullover Hoody

OUTER WEAR

PURE EARTH[®]
SUSTAINABILITY



STORMTECH[®]

WK-3 | WK-3W

Ashburn Pullover Hoody

FEATURES

- Pure Earth by STORMTECH[™] • STORMTECH H2X-DRY[®] Moisture Management • 3-Piece Cross-Over Hood with Adjustable Drawcord
- UPF Rating 50+ • 1x1 Rib Knit Hood Trim • Cuffs and Hem
- Kanga Pockets with 1x1 Rib Knit Trim • Taped Neck Seam

FABRICATION

58% BCI Cotton/42% Recycled Polyester Waffle, 5.54 oz/yd² (USA) / 188gsm (CDN)

RECOMMENDED DECORATION:



H2X DRY
MOISTURE MANAGEMENT



M's & W's:
Black

M's & W's:
Granite Heather

M's & W's:
Graphite



CPF-3
Montebello
Pullover Hoody



PURE EARTH™
SUSTAINABILITY



STORMTECH™

CPF-3 | CPF-3W

Montebello Pullover Hoody

FEATURES

- Pure Earth by STORMTECH™ • STORMTECH H2X-DRY® Moisture Management • 3-Piece Cross-Over Hood with Adjustable Drawcord
- UPF Rating 50+ • 1x1 Rib Knit Cuffs • Taped Neck Seam
- Hem Side Slits

FABRICATION

58% BCI Cotton/38% Recycled Polyester/4% Spandex Single Jersey, 6.19 oz/yd2 (USA) / 210gsm (CDN)

RECOMMENDED DECORATION:



H2X DRY
MOISTURE MANAGEMENT

UPF 50+ **LIV SUN**
PROTECTION

UVX
SUN PROTECTION



M's & W's:
Ash
Heather

M's & W's:
Black

M's & W's:
Charcoal
Heather

M's & W's:
Ice Blue

M's & W's:
Rust

PURE EARTH[®]
SUSTAINABILITY



STORMTECH[®]

SNF-1

Unisex Avalanche Fleece Shirt

FEATURES

- Pure Earth by STORMTECH™ • Ultra Soft Sweater Knit Fleece with Brushed Interior • Brushed Tricot Lined Center Front Placket/Cuffs/Hem • Durable and Hard-Wearing Center Front Snap Closure
- Woven Collar Lining • Brushed Tricot Hand Warmer Pockets
- Fully Lined Flapped Chest Pocket with Snap Closure • Cuff Placket with Snaps • Unisex Sizing

FABRICATION

75% Recycled Polyester/25% Polyester Fleece, 9.44 oz/yd² (USA) / 320gsm (CDN)



SNF-1
Unisex Avalanche
Fleece Shirt



Black
Heather

Graphite
Heather

Navy
Heather

Oatmeal
Heather



XJK-1
Artimus Technical Shell

PURE EARTH[®]
SUSTAINABILITY



STORMTECH[®]

XJK-1M | XJK-1W

Artimus Technical Shell

FEATURES

- Pure Earth by STORMTECH[™] • STORMTECH 2.5-Layer H2XTREME[®] 10000/10000 Waterproof / Breathable Outer Shell • PFC-Free Durable Water Repellent Finish • High-Performance Windproof Outer Shell with Mechanical Stretch • Fully Sealed Seams • YKK[®] AquaGuard[®] Center Front Zipper • 360° Perforated Core Ventilation • Underarm Gussets • Articulated Elbows • Low-Profile Zippered Hand Pockets • Full Coverage Attached Hood with Partial Elasticized Opening • Full Coverage Front Collar • Welded Hood Brim • Welded Back Neck Reinforcement • Partial Elastic Cuffs with Adjustable Tabs • Single-Hand Hem Adjustment

FABRICATION

55% Polyester/45% Recycled Polyester Mechanical Stretch Ripstop 2.5 Layer, 2.95 oz/yd2 (USA) / 100gsm (CDN)

RECOMMENDED DECORATION:



H2XDRY[®]
MOISTURE MANAGEMENT



M's & W's:
Black

M's & W's:
Dolphin

M's & W's:
Navy

PURE EARTH[®]
SUSTAINABILITY



STORMTECH[®]

SSR-5 | SSR-5W

Scirocco Lightweight Shell

FEATURES

- Pure Earth by STORMTECH[™] • STORMTECH 2-Layer H2XTREME[®] 10000/10000 Waterproof / Breathable Outer Shell • PFC-Free Durable Water Repellent Finish • Fully Seam Sealed • Rollaway Hood with Adjustable Drawcord • Brushed Tricot Lined Collar
- Waterproof Center Front Zipper • Waterproof Zippered Chest Pockets • Waterproof Zippered Hand Pockets with Brushed Tricot
- Articulated Sleeves • Adjustable Cuffs and Hem • Mesh Lined Back Vent

FABRICATION

(Shell) 100% Recycled Polyester Twill, 4.10 oz/yd² (USA) / 139gsm (CDN); (Lining) 100% Recycled Polyester

RECOMMENDED DECORATION:



H2X DRY
MOISTURE MANAGEMENT



M's & W's:
Black

M's & W's:
Granite

M's & W's:
Navy

M's & W's:
Rust

M's & W's:
Sage Green

SSR-5W
Scirocco
Lightweight Shell



PDX-1
Montserrat
Thermal Jacket



PURE EARTH[®]
SUSTAINABILITY

STORMTECH[®]

PDX-1 | PDX-1W

Montserrat Thermal Jacket

FEATURES

- Pure Earth by STORMTECH™ • STORMTECH Thermolex™ High Loft Synthetic Down • PFC-Free Durable Water Repellent Finish
- High-Performance Windproof Outer Shell • Combination of Broken Fiberfill and Polyfill • Contrast Single Layer Stretch Side Panels
- Adjustable Hem with Drawcord • Elasticized Cuffs • Zippered Hand Pockets with Brushed Tricot • Internal Mesh Stash Pockets
- Internal Full-Length Stormflap with Chin Saver • Decoration Access

FABRICATION

(Shell) 55% Recycled Polyester/ 45% Polyester, 1.15 oz/yd2 (USA) / 39gsm (CDN); (Shell-Secondary): 92% Recycled Polyester/ 8% Elastane bonded with 100% Recycled Polyester Polar Fleece, 8.11 oz/yd2 (USA) / 275gsm (CDN); (Lining) 55% Recycled Polyester/ 45% Polyester (CDN)

RECOMMENDED DECORATION:



thermolex™
HIGH LOFT SYNTHETIC DOWN



M's & W's:
Black
Granite

M's & W's:
Granite
Black

M's & W's:
Indigo
Midnight

M's & W's:
Spruce
Mallard



PDV-1W
Montserrat Thermal Vest

OUTER WEAR

PURE EARTH[®]
SUSTAINABILITY



STORMTECH[®]

PDV-1 | PDV-1W

Montserrat Thermal Vest

FEATURES

- Pure Earth by STORMTECH[™] • STORMTECH Thermolex[™] High Loft Synthetic Down • PFC-Free Durable Water Repellent Finish
- High-Performance Windproof Outer Shell • Combination of Broken Fiberfill and Polyfill • Contrast Single Layer Stretch Side Panels
- Adjustable Hem • Partial Elasticized Armhole Trim • Zippered Hand Pockets with Brushed Tricot • Internal Mesh Stash Pockets
- Decoration Access

FABRICATION

(Shell) 55% Recycled Polyester/ 45% Polyester, 1.15 oz/yd² (USA) / 39gsm (CDN); (Shell-Secondary): 92% Recycled Polyester/ 8% Elastane bonded with 100% Recycled Polyester Polar Fleece, 8.11 oz/yd² (USA) / 275gsm (CDN); (Lining) 55% Recycled Polyester/ 45% Polyester

RECOMMENDED DECORATION:



thermolex[™]
HIGH LOFT SYNTHETIC DOWN



M's & W's:
Black
Granite

M's & W's:
Granite
Black

M's & W's:
Indigo
Midnight

M's & W's:
Spruce
Maillard



KBR-1
Narvik Softshell



PURE EARTH[®]
SUSTAINABILITY



STORMTECH[®]

KBR-1 | KBR-1W

Narvik Softshell

FEATURES

- Pure Earth by STORMTECH[™] • PFC-Free Water Repellent Finish
- Zippered Brushed Tricot Pockets • Internal Placket and Chin Saver
- Elasticized Cuffs • Adjustable Hem

FABRICATION

92% Polyester (42% Recycled Polyester)/8% Spandex bonded with 100% Recycled Polyester Polar Fleece, 8.11 oz/yd2 (USA) / 275gsm (CDN)

RECOMMENDED DECORATION:



M's & W's:
Black

M's & W's:
Dolphin

M's & W's:
Navy



HXR-1
Milano 1/4 Zip
Pullover

OUTER WEAR

PURE EARTH[®]
SUSTAINABILITY



STORMTECH[®]

HXR-1 | HXR-1W

Milano 1/4 Zip Pullover

FEATURES

- Pure Earth by STORMTECH[™] • STORMTECH H2X-DRY[®] Moisture Management • UPF Rating 50+ • 1/4 Zip Front • 4-Way Stretch Fabric • Articulated Action Shoulders • Flatlock Seams • Low-Profile Chin Saver • Contour Side Panels

FABRICATION

46% Recycled Polyester/45% Regular Polyester/ 9% Elastane, 6.55 oz/yd2 (USA) / 222gsm (CDN)

RECOMMENDED DECORATION:



H2X DRY
MOISTURE MANAGEMENT

UPF 50+
UV SUN
PROTECTION

UVX
SUN PROTECTION



M's & W's:
Black

M's & W's:
Classic Blue
Heather

M's & W's:
Charcoal
Heather

Men's only:
Rust
Heather

M's & W's:
Sage Green
Heather

W's only:
Ice Blue
Heather



PURE EARTH™
SUSTAINABILITY

STORMTECH®

HTZ-3 | HTZ-3W

Treeline Performance Jacket

FEATURES

- Pure Earth by STORMTECH™ • STORMTECH H2X-DRY® Moisture Management • Low-Profile Chin Saver • Concealed Zippered Hand Pockets with Brushed Tricot • Articulated Action Shoulders and Elbows • Contoured Side Panels • Thumb Holes

FABRICATION

44% Recycled Polyester/44% Regular Polyester/12% Spandex, 7.96 oz/yd2 (USA) / 270gsm (CDN)

RECOMMENDED DECORATION:



H2XDRY
MOISTURE MANAGEMENT

HTZ-3W
Treeline
Performance
Jacket



M's & W's:
Black

M's & W's:
Black
Heather

M's & W's:
Red

M's & W's:
Classic Blue
Heather

M's & W's:
Dark Navy
Heather

M's & W's:
Granite
Heather

Men's only:
Rust
Heather

M's & W's:
Sage Green
Heather

W's only:
Ice Blue
Heather

PURE EARTH[®]
SUSTAINABILITY



STORMTECH[®]

HTZ-2 | HTZ-2W

Treeline Performance 1/4 Zip Pullover

FEATURES

- Pure Earth by STORMTECH™ • STORMTECH H2X-DRY® Moisture-Wicking Fabric • 1/4 Zip • Articulated Action Shoulders
- Contour Side Panels • Flatlock Seams • Chin Saver

FABRICATION

88% Polyester (44% Recycled/44% Regular)/12% Spandex, 7.96 oz/yd² (USA) / 270gsm (CDN)

RECOMMENDED DECORATION:



H2XDRY
MOISTURE MANAGEMENT

HTZ-2
Treeline Performance
1/4 Zip Pullover



M's & W's:
Black
Heather

M's & W's:
Dk Navy
Heather

Men's only:
Rust
Heather

M's & W's:
Sage Green
Heather

W's only:
Ice Blue
Heather



MXF-1
Novarra Full Zip
Jacket



PURE EARTH™
SUSTAINABILITY



STORMTECH™

MXF-1 | MXF-1W

Novarra Full Zip Jacket

FEATURES

- Pure Earth by STORMTECH™
- Low-Profile Chin Saver
- Concealed Zippered Hand Pockets with Brushed Tricot
- Brushed Tricot Lined Collar
- Articulated Action Shoulders
- Elastic Hem and Cuff Trim

FABRICATION

60% Recycled Polyester/ 40% Regular Polyester Fleece, 5.16 oz/yd2 (USA) / 175gsm (CDN)

RECOMMENDED DECORATION:



M's & W's:
Carbon
Stripe

M's & W's:
Classic Blue
Stripe



FHV-1
Avalanche Full Zip
Fleece Vest

OUTER WEAR

PURE EARTH[®]
SUSTAINABILITY



STORMTECH[®]

FHV-1 | FHV-1W

Avalanche Full Zip Fleece Vest

FEATURES

- Pure Earth by STORMTECH[™] • Ultra Soft Sweater Knit Fleece with Brushed Interior • Zippered Chest Pocket • Zippered Hand Warmer Pockets • Color Matched Trim • Flatlock Seams • Low-Profile Chin Saver

FABRICATION

75% Recycled Polyester/25% Polyester Fleece, 9.44 oz/yd² (USA) / 320gsm (CDN)

RECOMMENDED DECORATION:



M's & W's:
Black
Heather

M's & W's:
Granite
Heather

M's & W's:
Navy
Heather

M's & W's:
Oatmeal
Heather



MXV-1
Novarra Vest

PURE EARTH™
SUSTAINABILITY



STORMTECH™

MXV-1 | MXV-1W

Novarra Vest

FEATURES

- Pure Earth by STORMTECH™
- Low-Profile Chin Saver
- Concealed Zippered Hand Pockets with Brushed Tricot
- Brushed Tricot Lined Collar
- Elastic Hem and Armhole Trim

FABRICATION

60% Recycled Polyester/ 40% Regular Polyester Fleece, 5.16 oz/yd2 (USA) / 175gsm (CDN)

RECOMMENDED DECORATION:



M's & W's:
Carbon
Stripe

M's & W's:
Classic Blue
Stripe

PURE EARTH[®]
SUSTAINABILITY



STORMTECH[®]

VX-5 | VX-5W

Montauk Fleece Vest

FEATURES

- Pure Earth by STORMTECH[™] • Anti-Pill Recycled Polyester Polar Fleece • Brushed Tricot Lined Collar, Armhole, and Hem
- Contoured Side Panels • Zippered Hand Warmer Pockets
- Flatlock Seams • Internal Pockets • Low-Profile Chin Saver

FABRICATION

75% Recycled Polyester/ 25% Polyester Fleece, 6.93 oz/yd2 (USA) / 235gsm (CDN)

RECOMMENDED DECORATION:



VX-5
Montauk
Fleece Vest



M's & W's:
Black

M's & W's:
Granite

M's & W's:
Midnight

Men's only:
Rust

M's & W's:
Sage Green

W's only:
Ice Blue



TWXP-1
Monashee
Fleece Jogger



PURE EARTH[®]
SUSTAINABILITY



STORMTECH[®]

TWXP-1 | TWXP-1W

Monashee Fleece Jogger

FEATURES

- Pure Earth by STORMTECH[™]
- 1x1 Rib Knit Adjustable Waist with Drawcord
- 1x1 Rib Knit Cuffs
- Double Needle Topstitching
- On-Seam Hand Pockets

FABRICATION

59% BCI Cotton/41% Recycled Polyester Fleece, 7.28 oz/yd2 (USA) / 247gsm (CDN)

RECOMMENDED DECORATION:



M's & W's:
Black

M's & W's:
Charcoal
Heather

M's & W's:
Navy



Recycled Polyester

RPET fabrics are created by repurposing plastic found in landfills and oceans to create polyester yarn for apparel production.

All Stormtech garments utilising recycled materials are certified under the Global Recycled Standard (GRS) and we produce Transaction Certificates (TC) for each batch to ensure continued compliance from our materials partners and traceability of our supply chain.



Recycled material verification



Responsible production



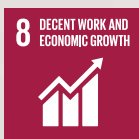
Chain of custody



Credible certification

SUSTAINABILITY & RESPONSIBILITY

We consider our business can make more significant contributions to four of the Global Goals:



08 - DECENT WORK & ECONOMIC GROWTH

Ensure good working conditions, both within the Group and in the global supply chain.



12 - RESPONSIBLE PRODUCTION & CONSUMPTION

Develop as sustainable products as possible and actively spread knowledge and information about sustainable consumption.



13 - CLIMATE ACTION

Decrease indirect GHG emissions from production and choose transportation with eco-friendly fuels and improved vessels

MEMBERSHIP



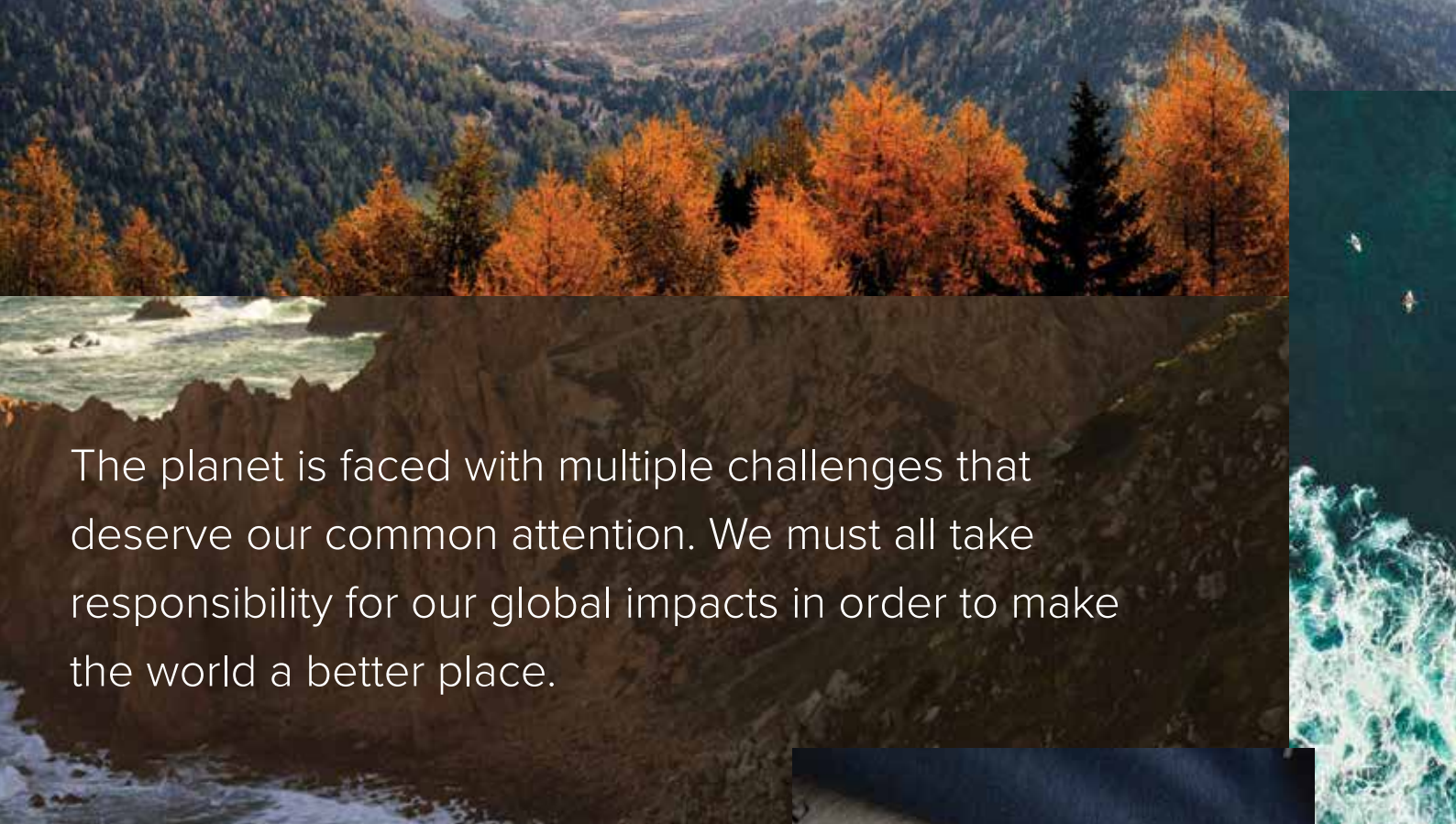
James Harvest Sportswear has adopted the amfori BSCI Code of Conduct.

It contains requirements on minimum wage, working hours and the prohibition of child labour, amongst

several other requirements from international conventions.

We also have a commitment towards BSCI to engage our suppliers in third party examination by independent auditors.





The planet is faced with multiple challenges that deserve our common attention. We must all take responsibility for our global impacts in order to make the world a better place.



As the world today is more interconnected than ever and the Global Goals can only be realized through partnerships and cooperation, the most crucial goal is Goal 17 – Partnerships for the goals. Civil society alone cannot solve the challenges facing the world,

nor can nations or the business sector. Partnerships are thus a prerequisite, a tool for achieving the other 16 goals. Therefore, James Harvest is committed to several global partnerships on issues and challenges that require cooperation at a higher level than individual companies

17 PARTNERSHIPS FOR THE GOALS



17 - PARTNERSHIPS FOR THE GOALS

Partnerships such as amfori BSCI, FLA, International Accord for Health and Safety in the Garment and Textile Industry, Clean Shipping Index and Mistra Future Fashion.

The Clean Shipping Index aims to impact the shipping companies to use cleaner vessels by ranking the most high-performing ships. Transport buyers can use the Clean Shipping Index to calculate and minimize their environmental footprint.



Textile Exchange is an international non-profit organization working for responsible expansion of the textile industry and the organic cotton production.

JAMES HARVEST



JH125
Ashland Organic V Sweater



 JAMES HARVEST

JH125 | JH125W

Ashland Organic V Sweater



FEATURES • Fine knit V-neck cotton sweater • 1x1 rib at cuff and hem
• Double flatknit at neck • Oeko-Tex 100 Certified.

FABRICATION

100% organic cotton, 12gg, 255 g/m²

RECOMMENDED DECORATION:



Black

JH125W

Ashland Organic V Sweater



JAMES HARVEST

YELLOW BOW 50



Black



Navy



Navy Striped



Sky Blue



Sky Blue Striped



White



HFY50 | HFY50W

Yellow Bow 50



FEATURES • Taped main-seams (no wrinkles) • Tall, 4mm-thick buttons • Curved hem • Semi cut-away collar • Solid colours • Split back yoke • Single angle cuff with cufflink hole • Raised front placket

FABRICATION

60% organic cotton, 40% recycled polyester

RECOMMENDED DECORATION:



WRINKLE RESIST
4/6



STRETCH
0/6



WEIGHT
134 G/M²



EASY CARE



WATER ABSORB
+ QUICK DRY



LONG-LASTING
WHITE



DURABLE



JAMES HARVEST

YELLOW BOW 53



Sky Blue Check



Navy Check



HFY53 | HFY53W

Yellow Bow 53



FEATURES • 22% long staple compact cotton, 51.5% Lyocell, 22.5% recycled Polyamide, 4% recycled Elastane, 99 G/M² • Stretch with Easy Care • Tall 4mm thick buttons • Curved hem • Soft modern cut-away collar with hidden button down • Fine twill weave with check pattern • Split back yoke • Soft round edge cuff with cufflink hole • Flat front placket

FABRICATION

22% long staple compact cotton, 51.5% Lyocell, 22.5% recycled Polyamide, 4% recycled Elastane, 99 G/M²

RECOMMENDED DECORATION:



LegendLife®
Where brands live™

 STORMTECH®

 Atlantis

 JAMES HARVEST

 J. HARVEST & FROST
CORPORATE SHIRTMAKER

legendlife.com.au