

UNIFORM

A SELECTION OF ESSENTIAL STYLES

Atlantis

STORMTECH

next level
apparel

STEDMAN.

JAMES HARVEST

J. HARVEST & FROST

LEGEND
BLACK

BEACON
SPORTWEAR - U.S.A.

Great
Southern
GLOTHING COMPANY

Printer

Legend®



Uniform LOOKBOOK

Welcome to Legend Life's go-to resource for high-quality popular uniform solutions.

We are proud to offer premium brands, known for their innovative fabric technologies and commitment to quality.

From stylish polos and corporate wear to functional outerwear, our apparel is designed to meet the needs of businesses, schools, and organisations that require consistency, comfort, and professionalism.

For the full range, visit
www.legendlife.com.au


Contents

Headwear	3
T-shirts	10
Business Shirts	15
Polos	20
Jackets	30
Vests	39

HEADWEAR

 Atlantis

 **LEGEND
BLACK**

 **Legend®**

A1300

Estoril



100% polyester jacquard



A2650

Rapper Cotton



Front / bill / underbill / button: 100% chino cotton twill
Side & back: 100% polyester mesh

A4520

Andy



50% recycled polyester / 50% acrylic

NEW



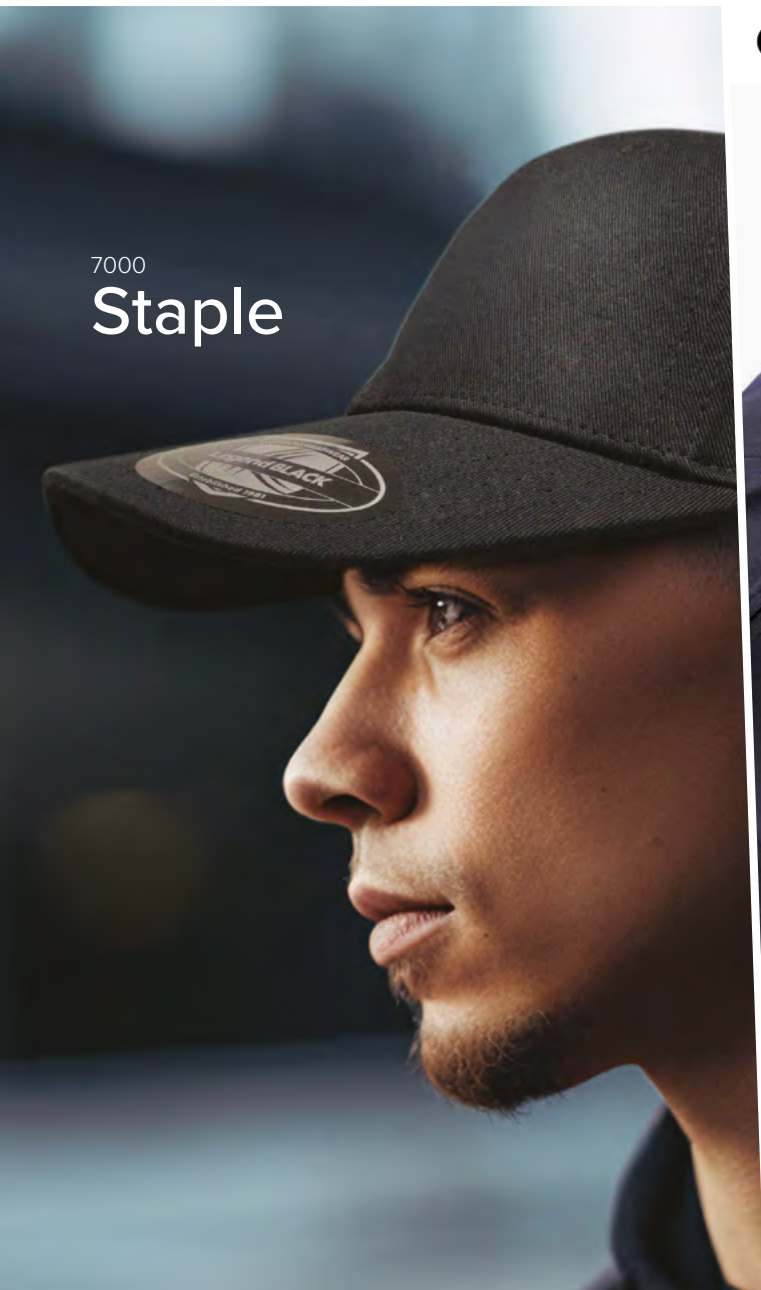
7030
Streamliner

100% polyester fabric



7000

Staple



100% premium cotton twill





4229
Acrylic
Beanie



100% acrylic, AZO free

T-SHIRTS



STEDMAN®

STEDMAN.

ST2000

Men's Classic T



100% pre-shrunk cotton (Grey Heather fabric 85% cotton / 15% viscose)

STEDMAN.



ST2600
Women's
Classic T

100% pre-shrunk cotton



ST2200
**Junior
Classic T**

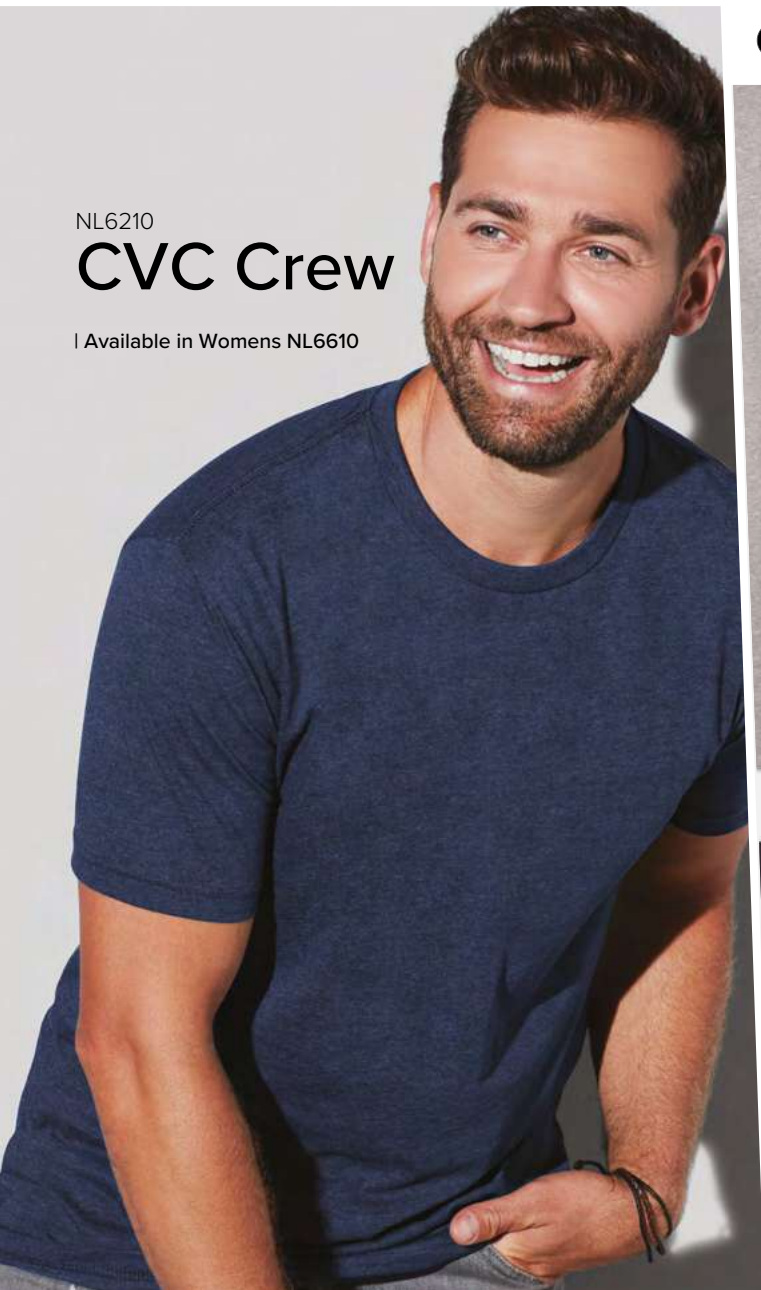


100% pre-shrunk cotton

NL6210

CVC Crew

| Available in Womens NL6610



Self Fabric: combed cotton / poly jersey

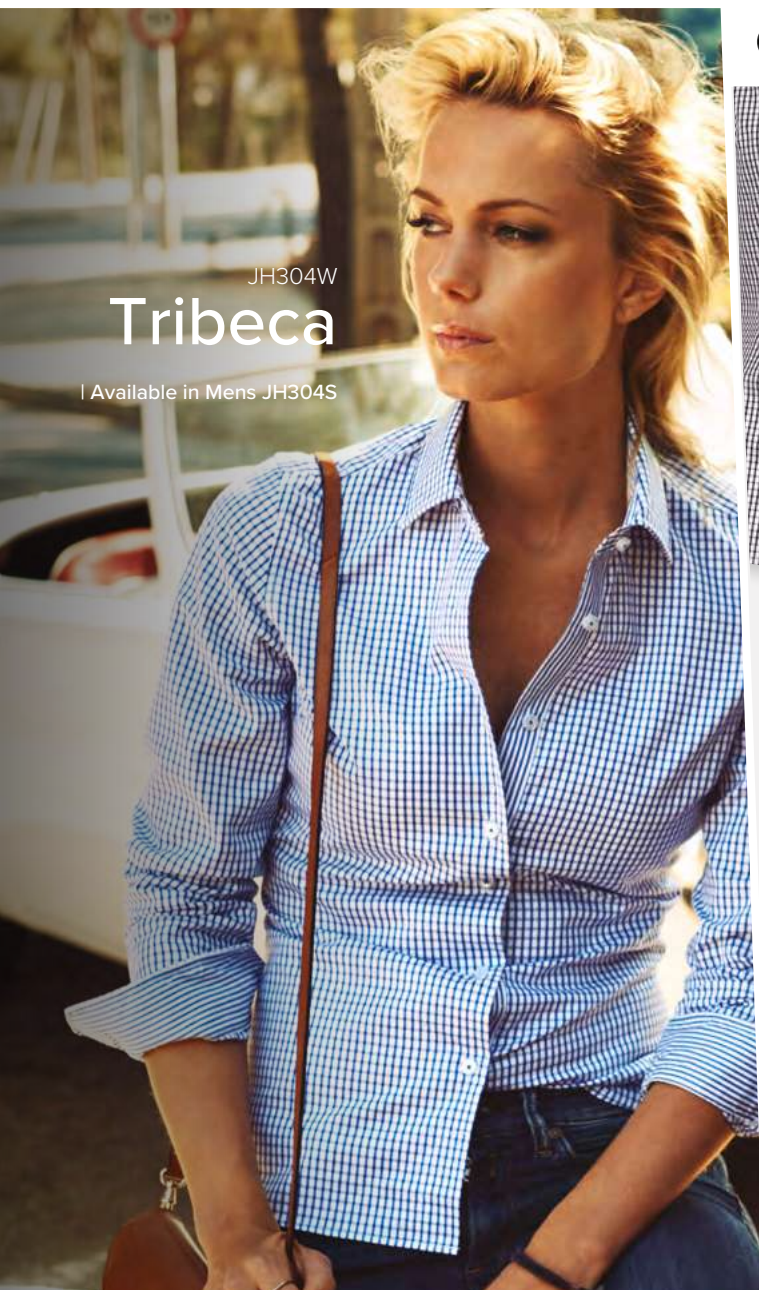
BUSINESS SHIRTS



JAMES HARVEST



J. HARVEST & FROST
CORPORATE SHIRTMAKER



JH304W

Tribeca

| Available in Mens JH304S



100% combed cotton

Baltimore

JH300S

Available in Women's JH300W |



100% combed cotton

JH302S

Redding

| Available in Women's JH302W



100% cotton





HFY50

Yellow Bow 50

| Available in Women's HFY50W



60% organic cotton, 40% recycled polyester
(White: 60% cotton, 40% recycled polyester)

POLOS



JAMES HARVEST



STORMTECH®

Printer

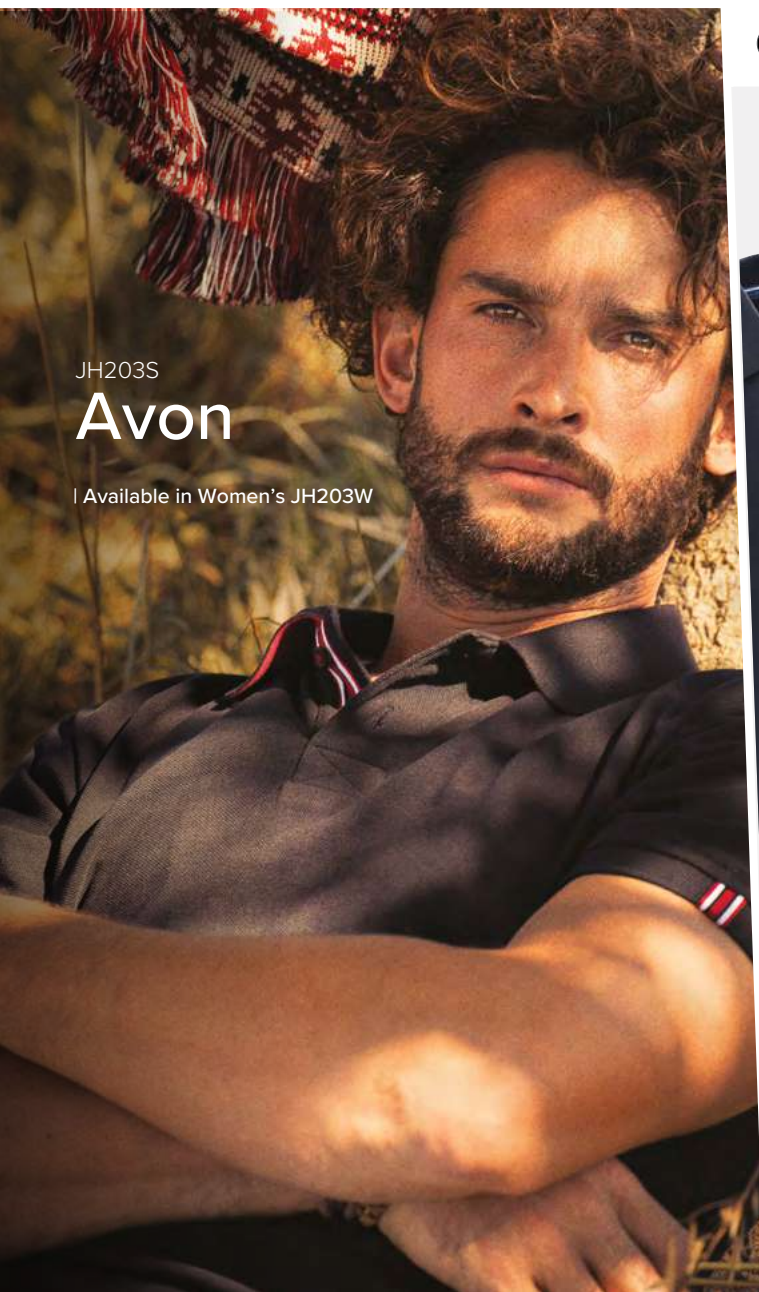
JH201

Sunset

| Available in Women's JH201W



95% combed compact cotton, 5% Lycra®, 200g/m²



JH203S

Avon

| Available in Women's JH203W



100% combed cotton, 240g/m²

JH200

Neptune

| Available in Women's JH200W

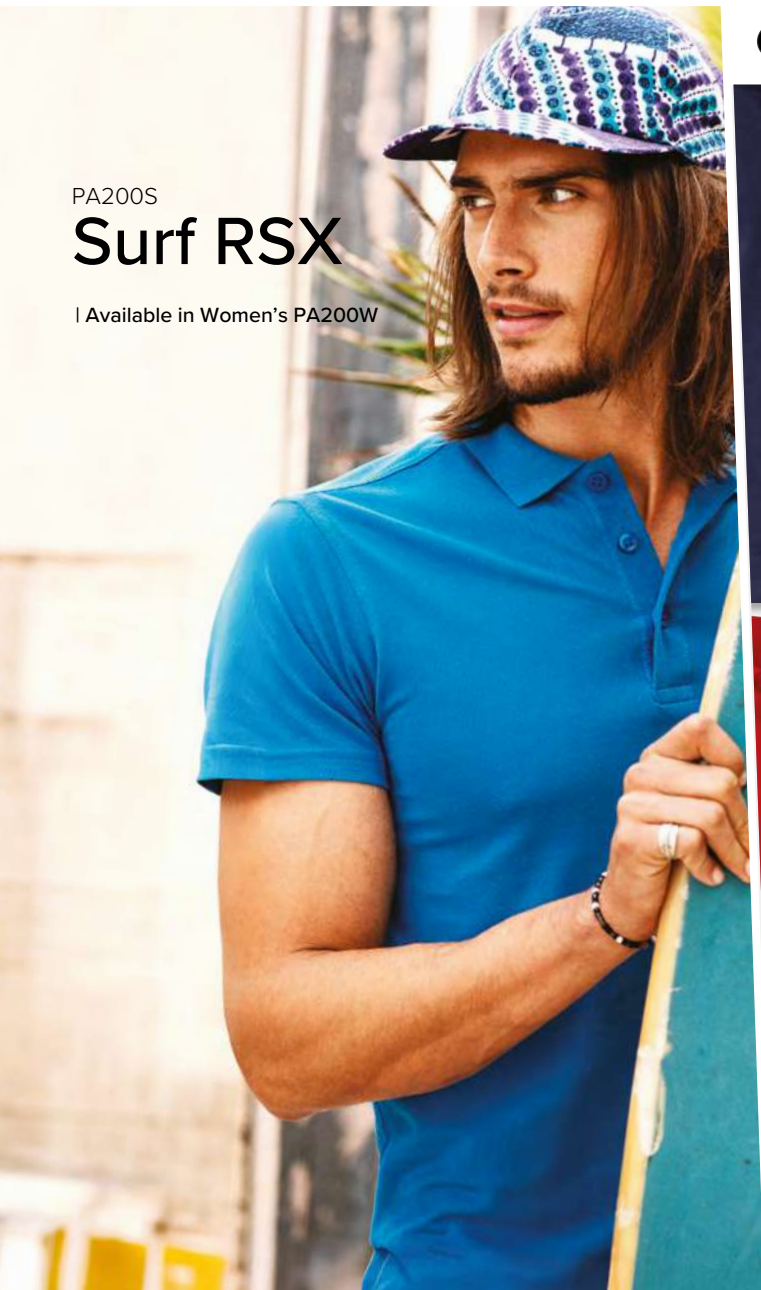


100% combed compact cotton, 200g/m²

PA200S

Surf RSX

| Available in Women's PA200W



100% combed cotton, 200g/m²

PS-1

Apollo

H2X-Dry

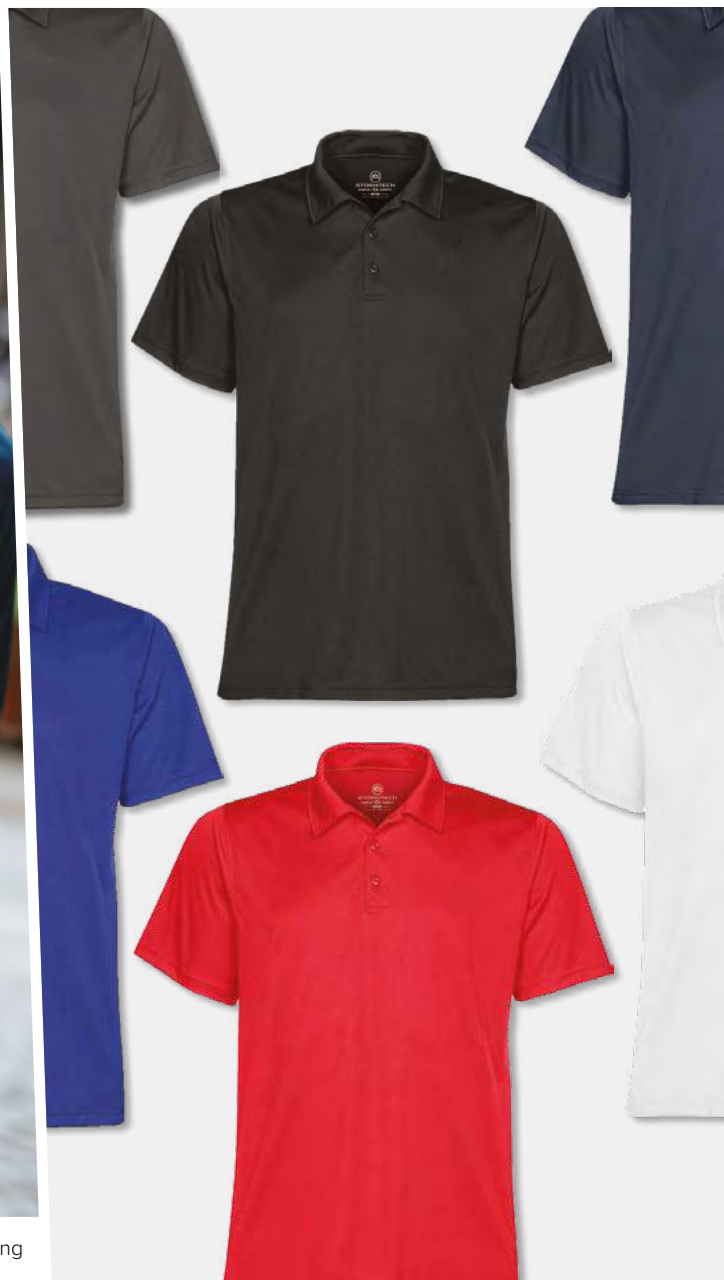
| Available in Women's PS-1W

UPF
40+

UVX
SUN PROTECTION

H2XDRY
MOISTURE MANAGEMENT

ANTI-SNAG
FINISH



100% full dull polyester with permanent H2X-DRY® moisture wicking

PG-1

Eclipse

Pique

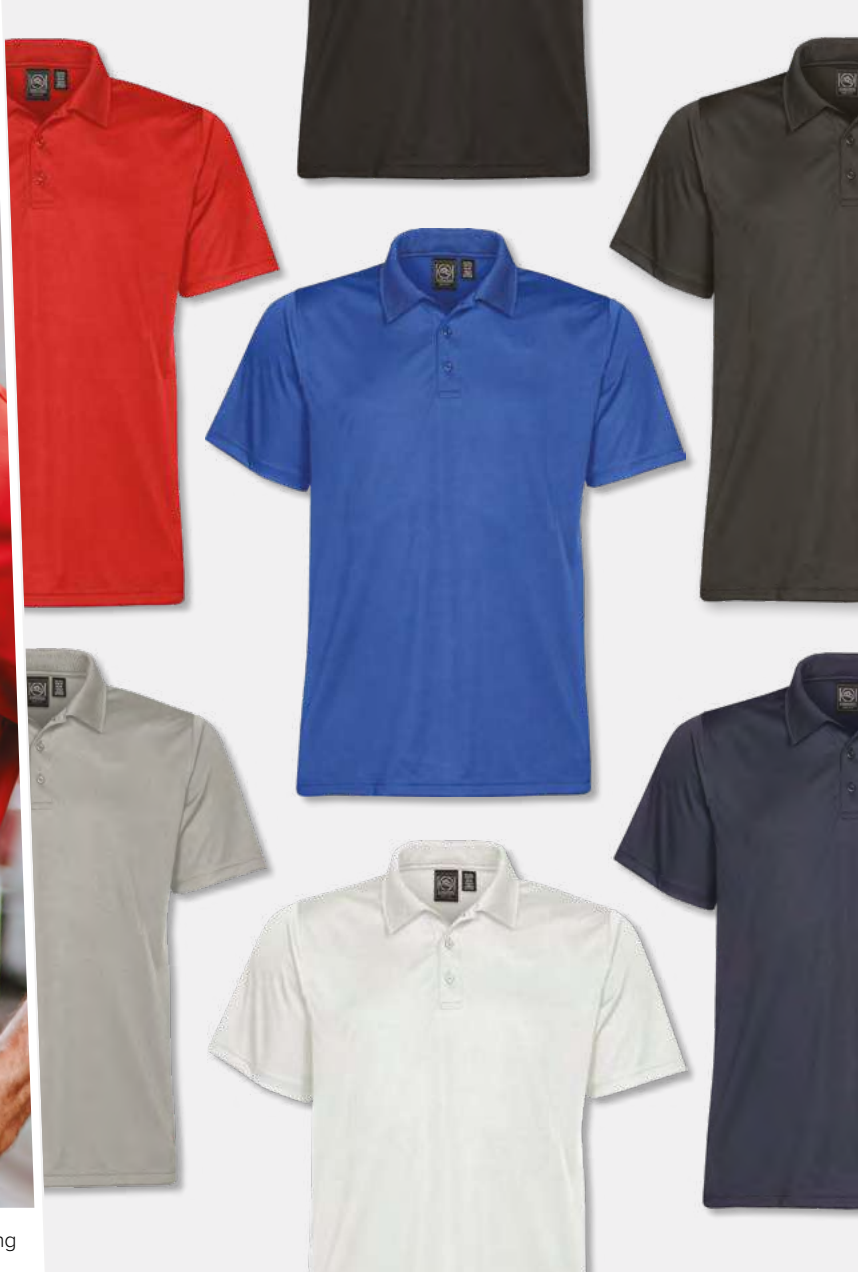
| Available in Women's PG-1W

UPF
40+

UVX
SUN PROTECTION

H2X-DRY
MOISTURE MANAGEMENT

ANTI-SNAG
FINISH



100% polyester pique with permanent H2X-DRY® moisture wicking

IPS-4

Piranha

Performance

| Available in Women's IPS-4W

UPF
50+

UVX
SUN PROTECTION

H2X DRY
MOISTURE MANAGEMENT

ANTI-SNAG
FINISH

91% polyester, 9% spandex with permanent H2X-DRY® moisture wicking



XP-1
Inertia
Sport

| Available in Women's XP-1W

UPF
30+

UVX
SUN PROTECTION

H2X DRY
MOISTURE MANAGEMENT

ANTI-SNAG
FINISH



100% polyester with permanent H2X-DRY® moisture wicking

PS-2

Phoenix

H2X-Dry

| Available in Women's PS-2W

UPF
40+

UVX
SUN PROTECTION

H2X DRY
MOISTURE MANAGEMENT

ANTI SNAG
FINISH

100% full dull polyester with permanent H2X-DRY® moisture wicking



JACKETS

 **STORMTECH®**

 **JAMES HARVEST**

 **BEACON**
SPORTSWEAR U.S.A.

 **Great
Southern**
CLOTHING COMPANY

NEW



JH130W

Arches Padded Jacket

| Available in Men's JH130

Outer shell - 100% recycled polyester outer shell (82gm/²)
Inner lining - 100% recycled polyester inner lining (37gm/²)
Body / Sleeves - Bluesign 95% recycled polyester / 5% polyester padding
(160gm/² body / 140gm/² sleeves)



XSJ-1

Cruise

| Available in Women's XSJ-1W



H2XTREME
WATERPROOF. BREATHABLE.

97% polyester, 3% spandex bonded with 100% polyester fleece



KSB-1

Orbiter

| Available in Women's KSB-1W



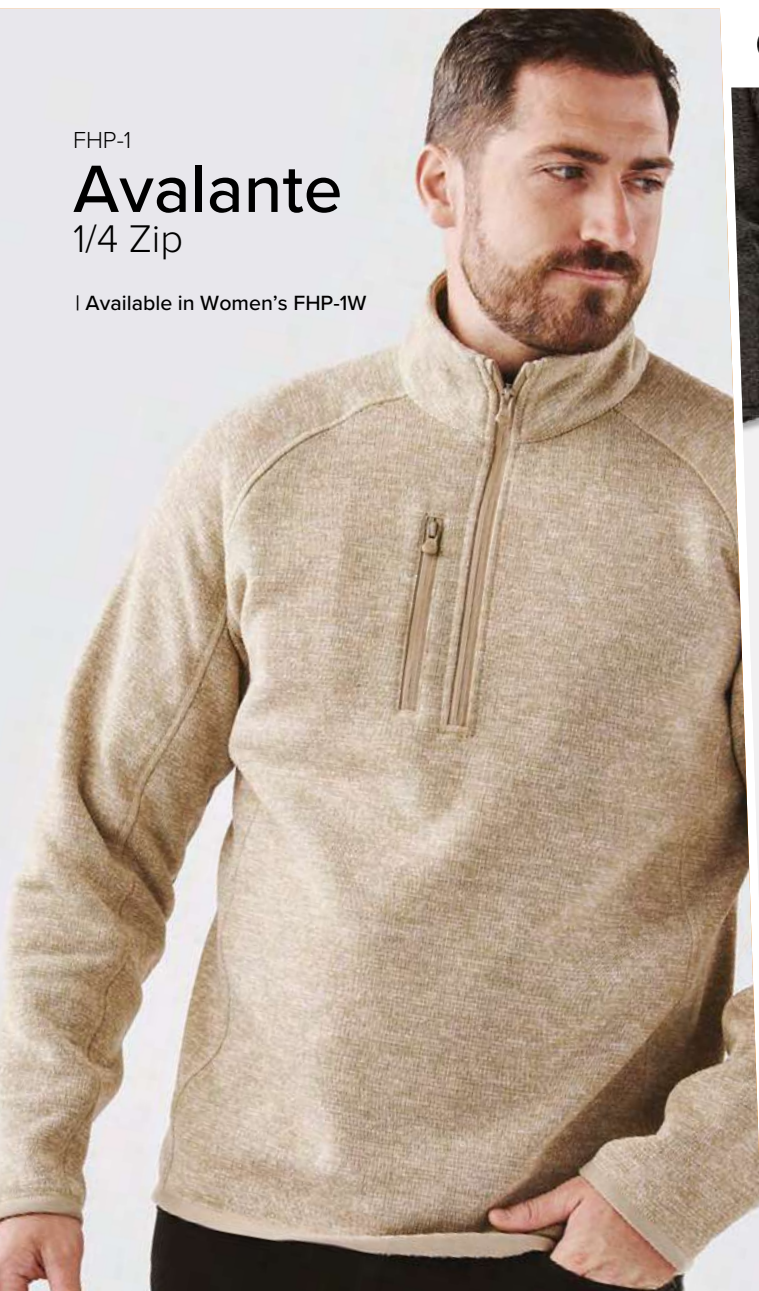
92% polyester, 8% spandex bonded with 100% polyester fleece

FHP-1

Avalante

1/4 Zip

| Available in Women's FHP-1W



75% recycled polyester/25% polyester fleece

JH100

Snyder

| Available in Women's JH100W



96% polyester 4% spandex

BN100

Perkins

| Available in Women's BN100W



3 layer bonded fabric, 100% polyester,
microfleece and elastic polyester with PU laminate

QX-1

Nautilus Quilted Jacket

| Available in Women's QX-1W



100% polyester pongee

J806

The Puffer

| Available in
Women's J806W
Junior J806Y



100% nylon, horizontal quilted body

VESTS

 STORMTECH®

 JAMES HARVEST

 **Great
Southern**
CLOTHING COMPANY

JH135

Arches Padded Vest

| Available in Women's JH135W

NEW



Outer shell - 100% recycled polyester outer shell (82gm²)

Inner lining - 100% recycled polyester inner lining (37gm²)

Body - Bluesign 95% recycled polyester / 5% polyester padding (160gm²)

KXV-1

Nautilus

Men's Quilted Vest

| Available in Womens KXV-1W



100% polyester pongee



H2XDRY is a moisture wicking technology that's used to keep water away from your skin and your garment dry.



Ultimate weather protection through advanced waterproof/breathable technology-perfected to keep moisture at bay, inside and out.



Anti-snap construction is achieved by using specialised yarns that are less likely to break or unravel when pulled or snagged by incorporating specific knitting techniques that reinforce the fabric and reduce the risk of snagging.



UVX rating is a measurement of the ultraviolet protection provided by a fabric used in garments, indicating how effectively the fabric blocks UVA and UVB radiation from the sun, which can cause skin damage. Fabrics are treated or constructed using densely woven or knitted fabrics and UV absorbent fibre to reflect UVA and UVB light.

FABRIC TECHNOLOGY



Heavy-duty, heavy weight nylon and polyester fabrics are constructed to withstand the most rigorous and extreme industrial applications and weather conditions. HD fabrics are also coated to achieve a high level of water resistance.



High loft, high efficiency Thermolex™ synthetic down – developed and tested by STORMTECH is inserted into each quilted panel to a specific fill weight in order to achieve maximum warmth and softness.



Polygiene Stay Fresh-treated garments allow you to enjoy the confidence of fresh, all-day wear while minimising the need for frequent washing.



The PFC-free DWR (Durable Water Repellent) technology is a polymer coating added to outerwear to provide water-resistant protection.



STORMTECH are proud to offer an unbeatable 5 Year Warranty across our entire range, giving you peace of mind when you buy.

J808

The Puffer Vest

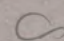
| Available in
Women's J808W

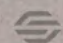



100% nylon, horizontal quilted body

UNIFORM


A SELECTION OF ESSENTIAL STYLES

 Atlantis


 STORMTECH®

 next level
apparel

STEDMAN.

 JAMES HARVEST


 J. HARVEST & FROST
CORPORATE SHIRTS/POLO

 LEGEND
BLACK

 BEACON
SPORTSWEAR · U.S.A.

 Great
Southern
CLOTHING COMPANY

®Printer

 Legend®