

ARTWORK  
APPROVAL

PROOF  
V1

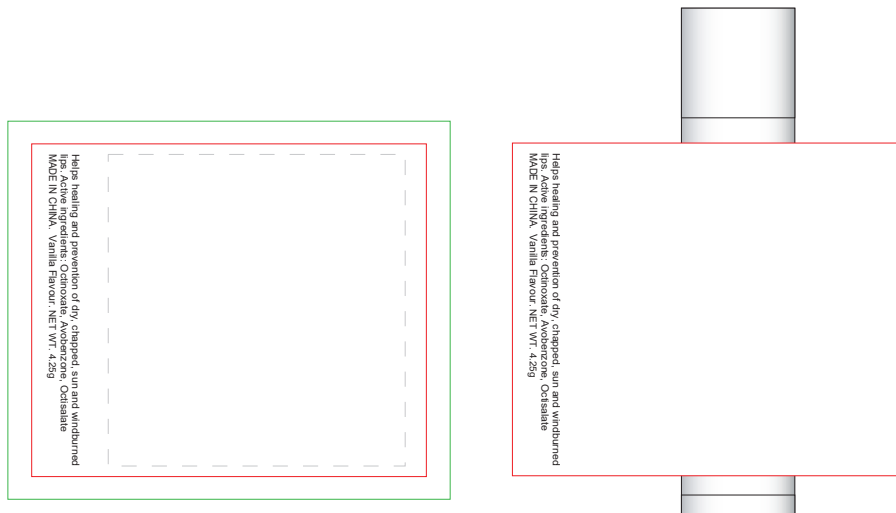
JOB NO. XXXXXX

LB11.H606 - Vanilla Lip Balm

ARTWORK (100% approx.)

NEW/REPEAT ORDER/ REDO/BACK ORDER

Actual Print Size  
52.2mm W x 44mm H



- - - Print Area (Please keep important elements within this area)
- Cut Line (This is where your artwork will be trimmed off)
- Bleed area (Artwork that reaches in this area will be trimmed off)

<b>Product Colour/s</b> White	<b>Print colour/s</b> 4 Colour Process	<b>Quantity</b> (Please specify quantity here)
<b>Print Method</b> ■ Digital Label: 52.2mm W x 44mm H	<b>Colours Available</b> 	

**Additional Notes/Art Instructions:**

\*Special art instructions that needs to be noted shall be placed here. If none, this note must be removed.

**Disclaimer notes:**

Colour proofs are to be used as a guide only. Line drawing is for approximate print positional guide only. Please familiarise yourself with the product prior to approving. It is not intended to be an exact scale or detailed representation. Small details or text, including™®, may fill in and not be legible. Dotted lines will not be printed and are for maximum print guide only. The fine lines and details in your logo may not be able to be clearly.

xx

2 ART PROOFS supplied FREE. Further art approvals will incur a \$20 fee per proof.

ARTWORK  
APPROVAL

PROOF  
V1

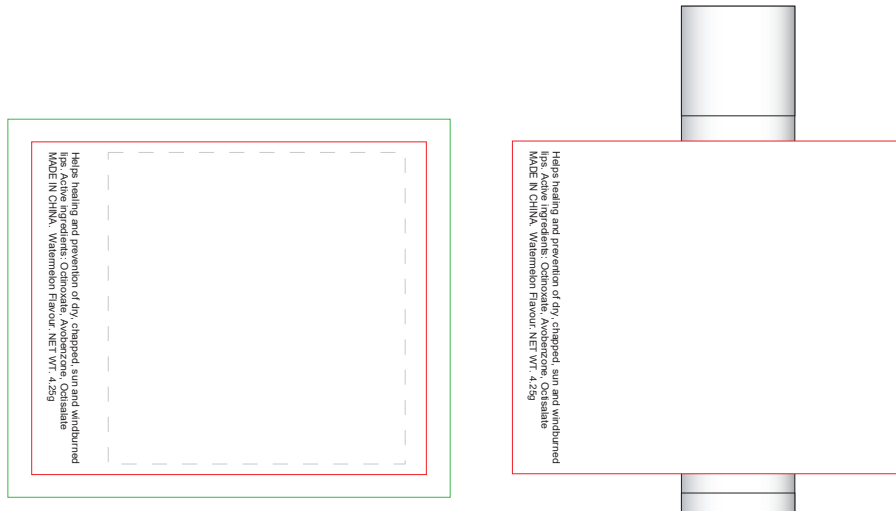
JOB NO. XXXXXX

LB11.H608 - Watermelon Lip Balm

ARTWORK (100% approx.)

NEW/REPEAT ORDER/ REDO/BACK ORDER

Actual Print Size  
52.2mm W x 44mm H



- - - Print Area (Please keep important elements within this area)
- Cut Line (This is where your artwork will be trimmed off)
- Bleed area (Artwork that reaches in this area will be trimmed off)

<b>Product Colour/s</b> White	<b>Print colour/s</b> 4 Colour Process	<b>Quantity</b> (Please specify quantity here)
<b>Print Method</b> ■ Digital Label: 52.2mm W x 44mm H	<b>Colours Available</b> 	

**Additional Notes/Art Instructions:**

\*Special art instructions that needs to be noted shall be placed here. If none, this note must be removed.

**Disclaimer notes:**

Colour proofs are to be used as a guide only. Line drawing is for approximate print positional guide only. Please familiarise yourself with the product prior to approving. It is not intended to be an exact scale or detailed representation. Small details or text, including™®, may fill in and not be legible. Dotted lines will not be printed and are for maximum print guide only. The fine lines and details in your logo may not be able to be clearly.

xx

2 ART PROOFS supplied FREE. Further art approvals will incur a \$20 fee per proof.

ARTWORK  
APPROVAL

PROOF  
V1

JOB NO. XXXXXX

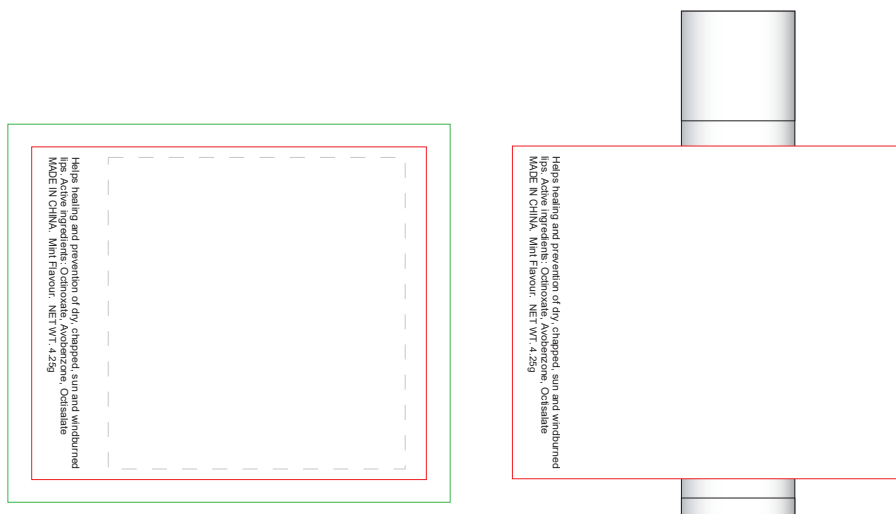
LB11.H609 - Mint Lip Balm

ARTWORK (100% approx.)

NEW/REPEAT ORDER/ REDO/BACK ORDER

Actual Print Size

52.2mm W x 44mm H



- - - Print Area (Please keep important elements within this area)
- Cut Line (This is where your artwork will be trimmed off)
- Bleed area (Artwork that reaches in this area will be trimmed off)

<b>Product Colour/s</b> White	<b>Print colour/s</b> 4 Colour Process	<b>Quantity</b> (Please specify quantity here)
<b>Print Method</b> ■ Digital Label: 52.2mm W x 44mm H	<b>Colours Available</b> 	

**Additional Notes/Art Instructions:**

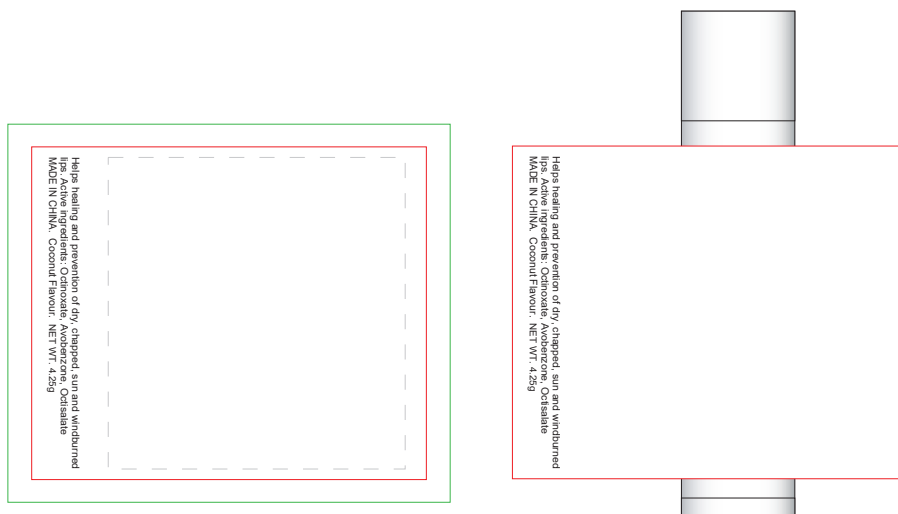
\*Special art instructions that needs to be noted shall be placed here. If none, this note must be removed.

**Disclaimer notes:**

Colour proofs are to be used as a guide only. Line drawing is for approximate print positional guide only. Please familiarise yourself with the product print to approving. It is not intended to be an exact scale or detailed representation. Small details or text, including™®, may fill in and not be legible. Dotted lines will not be printed and are for maximum print guide only. The fine lines and details in your logo may not be able to be clearly.

xx

2 ART PROOFS supplied FREE. Further art approvals will incur a \$20 fee per proof.



- - - Print Area (Please keep important elements within this area)  
— Cut Line (This is where your artwork will be trimmed off)  
— Bleed area (Artwork that reaches in this area will be trimmed off)

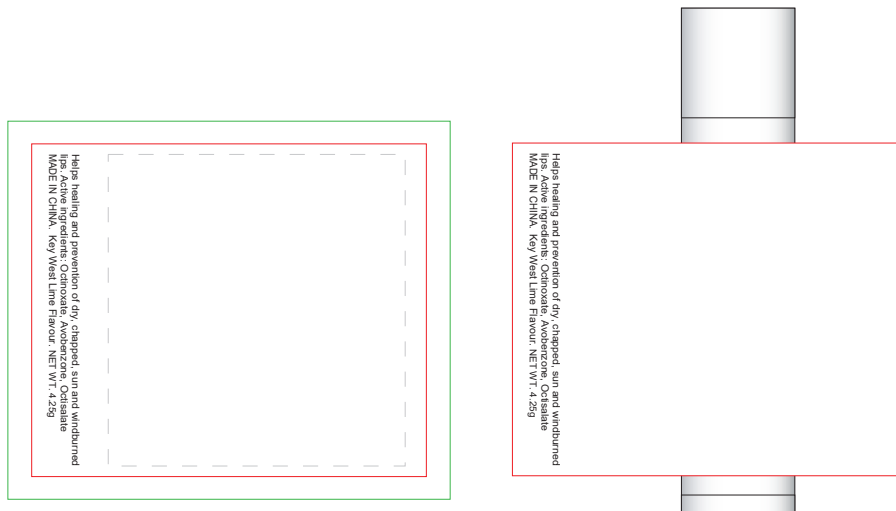
<b>Product Colour/s</b> White	<b>Print colour/s</b> 4 Colour Process	<b>Quantity</b> (Please specify quantity here)
<b>Print Method</b> ■ Digital Label: 52.2mm W x 44mm H	<b>Colours Available</b> 	

**Additional Notes/Art Instructions:**

\*Special art instructions that needs to be noted shall be placed here. If none, this note must be removed.

**Disclaimer notes:**

Colour proofs are to be used as a guide only. Line drawing is for approximate print positional guide only. Please familiarise yourself with the product prior to approving. It is not intended to be an exact scale or detailed representation. Small details or text, including™®, may fill in and not be legible. Dotted lines will not be printed and are for maximum print guide only. The fine lines and details in your logo may not be able to be clearly.



- - - Print Area (Please keep important elements within this area)
- Cut Line (This is where your artwork will be trimmed off)
- Bleed area (Artwork that reaches in this area will be trimmed off)

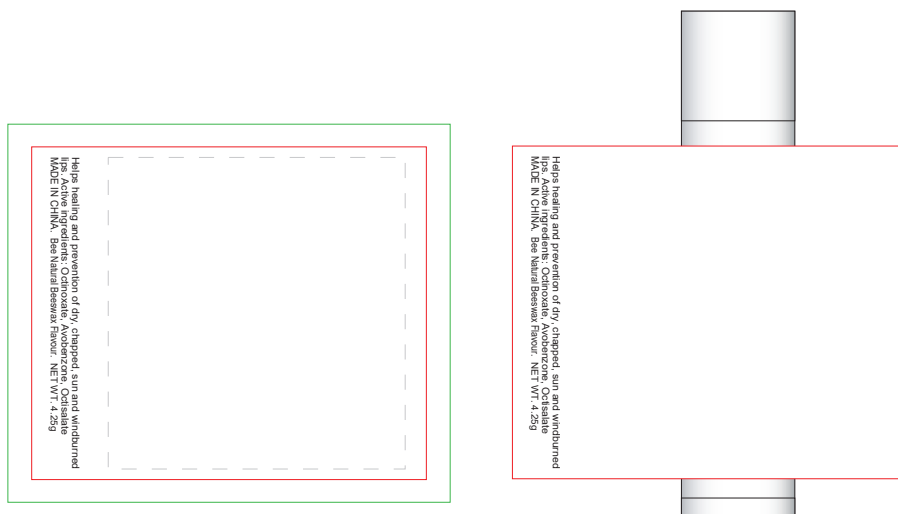
<b>Product Colour/s</b> White	<b>Print colour/s</b> 4 Colour Process	<b>Quantity</b> (Please specify quantity here)
<b>Print Method</b> ■ Digital Label: 52.2mm W x 44mm H	<b>Colours Available</b> 	

**Additional Notes/Art Instructions:**

\*Special art instructions that needs to be noted shall be placed here. If none, this note must be removed.

**Disclaimer notes:**

Colour proofs are to be used as a guide only. Line drawing is for approximate print positional guide only. Please familiarise yourself with the product prior to approving. It is not intended to be an exact scale or detailed representation. Small details or text, including™®, may fill in and not be legible. Dotted lines will not be printed and are for maximum print guide only. The fine lines and details in your logo may not be able to be clearly.



- - - Print Area (Please keep important elements within this area)
- Cut Line (This is where your artwork will be trimmed off)
- Bleed area (Artwork that reaches in this area will be trimmed off)

<b>Product Colour/s</b> White	<b>Print colour/s</b> 4 Colour Process	<b>Quantity</b> (Please specify quantity here)
<b>Print Method</b> ■ Digital Label: 52.2mm W x 44mm H	<b>Colours Available</b> 	

**Additional Notes/Art Instructions:**

\*Special art instructions that needs to be noted shall be placed here. If none, this note must be removed.

**Disclaimer notes:**

Colour proofs are to be used as a guide only. Line drawing is for approximate print positional guide only. Please familiarise yourself with the product prior to approving. It is not intended to be an exact scale or detailed representation. Small details or text, including™®, may fill in and not be legible. Dotted lines will not be printed and are for maximum print guide only. The fine lines and details in your logo may not be able to be clearly.